



NORTHFIELD TOWNSHIP PARKS AND RECREATION MASTER PLAN 2021–2026

NORTHFIELD TOWNSHIP, WASHTENAW COUNTY, MICHIGAN

February 1, 2021

PARKS AND RECREATION MASTER PLAN 2021-2026

NORTHFIELD TOWNSHIP, MI

Prepared with the assistance of:



235 E. Main Street, Suite 105

Northville, MI 48167

T: 248.596.0920

F: 248.596.0930

www.mcka.com

ACKNOWLEDGMENTS

Thank you.

The participation and cooperation of community leaders, residents and members of civic organizations in the preparation of the 2021-2026 Northfield Parks and Recreation Master Plan is greatly appreciated.

The content in this Plan reflects the ongoing collaboration between Township community members, stakeholders, the Parks and Recreation Board, and the Township Board.

In particular, we acknowledge the efforts of:

TOWNSHIP BOARD

Ken Dignan, Supervisor
Kathy Manley, Clerk
Lenore Zelenock, Treasurer
Nate Muchow, Trustee
Jacki Otto, Trustee
Janet Chick, Trustee
Joshua Nelson, Trustee

PARKS AND RECREATION BOARD

Jennifer DeLisle, Chair
Chuck Steuer, Vice Chair
Tawn Beliger, Outgoing Board of Trustees Representative
Jacki Otto, Incoming Board of Trustees Representative
Lee Cole, School Board Representative
Sam Iaquinto, Planning Commission Representative
Leigh Prince, Member
Tim Saville, Member
Cici Koenig, Member
Doug Wilbur, Downtown Development Authority Representative

PARKS AND RECREATION SUB-COMMITTEE

Tawn Beliger
Jacki Otto
Leigh Prince
Jennifer DeLisle
Cici Koenig

TABLE OF CONTENTS

1. INTRODUCTION	1
A Plan for an Engaged Community	1
Planning Process	2
Importance of Parks and Recreation Systems	2
2. COMMUNITY SNAPSHOT	3
Northfield Township	3
Community Profile	5
Administrative Structure	8
Funding	10
Budget	10
Grant History	10
3. WATER, LAND, AND PARKS	15
Natural Resources	15
Natural Features Framework	16
Northfield Township Recreation Inventory	19
Privately-Owned Recreational Facilities	23
Recreation Systems Analysis	26
Acreage Analysis	26
Facilities Analysis	27
4. NORTHFIELD TOWNSHIP'S STRATEGY	31
The Vision	31
Community Engagement Process	32
Community Goals and Objectives	35
5. PARKS AND RECREATION IN ACTION	39
Call to Action	39
Action Plan	40
Top 5 Priority Projects	40
APPENDICES	
A Community Survey Data	
B Funding Sources	
C Resolution of Approval	
D Notices and Meeting Minutes	

This page intentionally left blank.

A scenic view of a lake with a small building and trees on the shore. The water is blue and calm, reflecting the sky. In the background, there are more trees and a distant shoreline.

INTRODUCTION

01

A PLAN FOR AN ENGAGED COMMUNITY

Welcome to the Northfield Township 2021 - 2026 Parks and Recreation Master Plan. This plan reflects a vision for parks and recreation within Northfield Township for the next several years. This plan serves as a roadmap for future recreation facilities by considering existing parks, as well as recreational programming, in and around the Township. The plan provides an assessment of the anticipated demand for additional or improved recreation facilities.

Northfield Township's Parks and Recreation Master Plan was prepared in accordance with the Michigan Department of Natural Resources' (MDNR) Guidelines for the Development of Community Park, Recreation, Open Space, and Greenway Plans. This plan also forms the basis for potential recreation grant funding from MDNR and other agencies and foundations.

Most importantly, this plan will act as Northfield Township's playbook for community building as it relates to parks and recreation over the next five or more years in conjunction with the Northfield Township Master Plan (2019), North Village Master Plan (2017), and the Downtown Strategic Action Plan (2017).

PLANNING PROCESS

The Parks and Recreation Master Plan was prepared with technical assistance from McKenna, a planning and design consulting firm, and with the active involvement of the Township’s administration and the Northfield Township Parks and Recreation Board and Master Plan Sub-Committee.

Resident input and action, through a community survey and a public hearing, provided critical input that guided the development of the plan. As a result, recommendations described within the action plan reflect the needs and ideas of those who use Northfield Township’s parks and recreation facilities.

Following several discussions held by the Parks and Recreation Board and Master Plan Subcommittee, and a draft review by the Parks and Recreation Board and Township Board, the Parks and Recreation Master Plan was submitted to Northfield Township Board of Trustees for adoption. Throughout the process, all meetings were open to the public, with the exception of the subcommittee meetings. Notices were posted beforehand, as provided by the Open Meetings Act. The planning process kicked off in September of 2020 and concluded with the adoption of the plan in January 2021.



IMPORTANCE OF PARKS AND RECREATION SYSTEMS

This plan addresses community desires related to parks and recreation amenities, which play a key role in the lives of Township residents by providing:

- Conservation and protection for natural resources while sustaining the rural and small town character.
- Improved connectivity and walkability.
- Both active and passive recreational opportunities.
- Improved quality of life for Northfield Township community members.
- Support for the Northfield Township Master Plan (2019), North Village Master Plan (2017), and the Downtown Strategic Action Plan (2017).



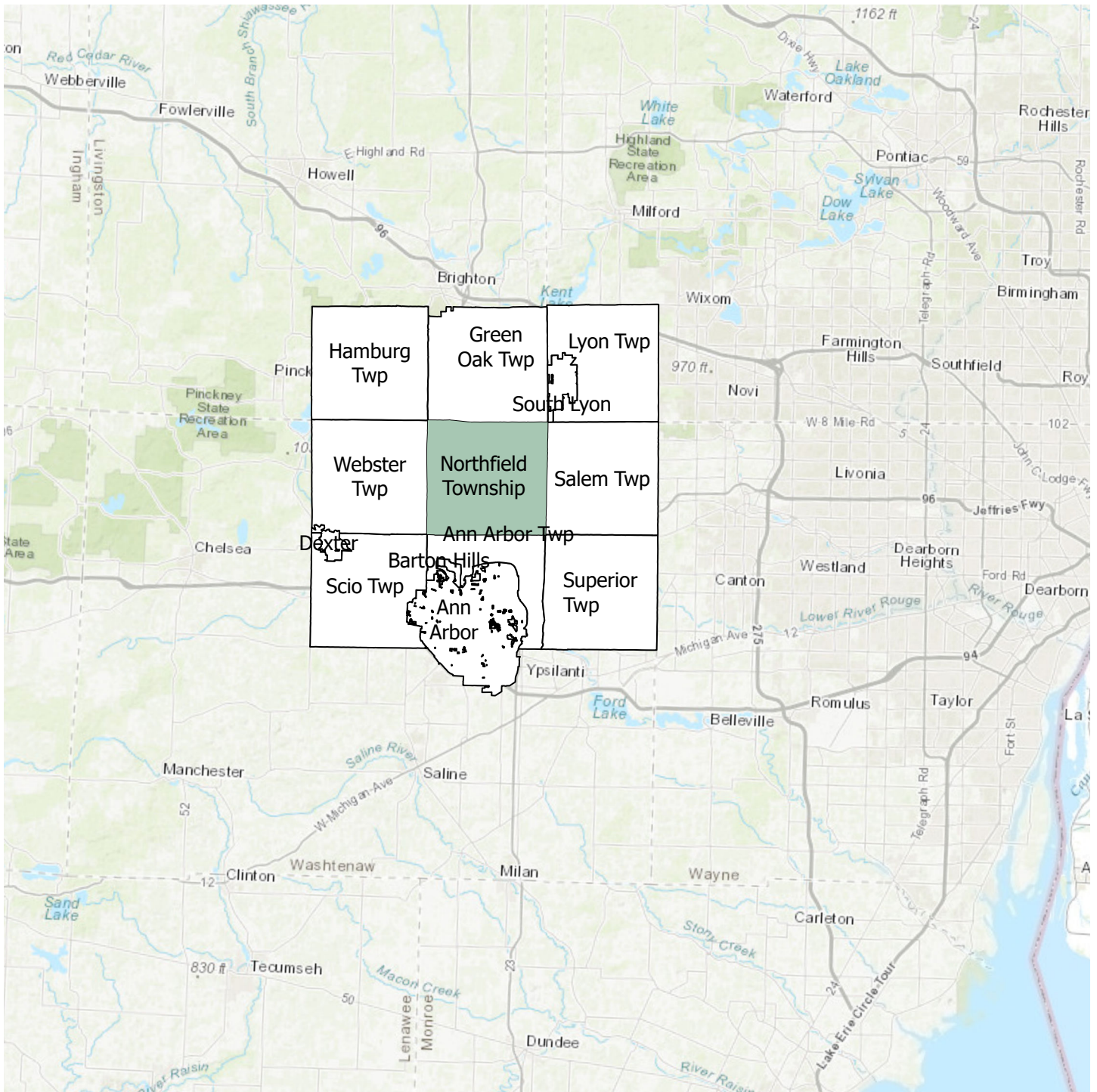
NORTHFIELD TOWNSHIP

The Community Snapshot chapter presents the regional and social composition of Northfield Township, together with the administrative structure and funding mechanisms. The Community Snapshot informs the possibilities for parks and recreation within the community.

Northfield Township, located in northeastern Washtenaw County and approximately one mile north of the City of Ann Arbor, covers about 36 square miles in area. The Township provides a rural escape nestled within the metro Ann Arbor area.

The Township was established in 1832 as an agricultural community and since then has evolved into a recreation destination centered on Whitmore Lake. Northfield Township takes great pride in being a community that provides a high quality of life for its residents and offers a diversity of values and experiences.

Northfield Township is bordered by Salem Township to the east, Ann Arbor Township to the south, Webster Township to the west, and Green Oak Township in Livingston County to the north.



Regional Context

Northfield

November 1, 2020

LEGEND

- Northfield Township
- Adjacent Municipalities



0 1 2
Miles

Aerial source: ESRI, Accessed 2020 Data Source Accessed 2011 Data Source Accessed 2011
Roads, Water Bodies source: Washtenaw, Livingston, Oakland County, MCGI 2019
Municipal Boundaries source: SEMCOG, Accessed 2020.

COMMUNITY PROFILE

Demographics characterize a community by identifying its changing trends and needs. Demographic information assessment can help to determine if the recreational needs of the Northfield Township community are met and what systemic improvements are needed.

The figures used in this plan come from the US Census Bureau’s 2019 5-year data, which uses statistical sampling over a 5-year period to describe the average characteristics over the period of collection. The table below shows population data for Northfield Township, neighboring townships, Washtenaw County, and the State of Michigan.

Demographic Trends

Table 1 below indicates that Northfield Township has a stable, slightly growing population. Northfield Township’s population growth of approximately 5% is similar to Washtenaw County’s growth (6.6%), indicating that the Township is not experiencing a unique population boom. Population trends are an important indicator for parks and recreation planning. Upward trends in population indicate increasing demand for parks and recreational features in Northfield Township. Data involving age and socio-economic status assist in identifying specific recreational needs.

TABLE 1. POPULATION AND MEDIAN HOUSEHOLD INCOME 2010–2019

	NORTHFIELD TOWNSHIP	SALEM TOWNSHIP	GREEN OAK TOWNSHIP	HAMBURG TOWNSHIP	WASHTENAW COUNTY	STATE OF MICHIGAN
2010 Population	8,245	5,627	23,804	6,328	344,791	9,883,640
2019 Population	8,673	6,293	25,376	6,343	367,601	9,986,857
2010 Income	\$66,249	\$76,812	\$83,799	\$97,478	\$68,018	\$45,413
2019 Income	\$75,574	\$101,763	\$90,706	\$93,245	\$72,586	\$59,584

Source: SEMCOG

Trends and Needs

Lifestyle trends identified in the Northfield Township community will affect the long-term future of parks and recreation. Identifying trends and needs of the community, beyond traditional demographic data such as income, age and employment status will help identify characteristics such as spending habits, recreation and entertainment preferences, and family structures.

Environmental Systems Research Institute’s (ESRI) Tapestry Segmentation provides lifestyle tapestry categories based upon socioeconomic and demographic characteristics. Table 2 and descriptions provided summarize data provided through ESRI Business Analyst that categorize Northfield Township residents’ top socioeconomic traits.

TABLE 2. ESRI TAPESTRY SEGMENTATION

TAPESTRY SEGMENT	PERCENT OF TOWNSHIP POPULATION	PERCENT OF U.S. POPULATION
Middleburg	26.6%	2.9%
Green Acres	22.9%	3.2%
Savvy Suburbanites	22.0%	3.0%
Southern Satellites	17.8%	3.2%
Emerald City	7.4%	1.4%
Professional Pride	3.4%	1.6%

Source: ESRI Business Analyst Tapestry Segmentation 2020

MIDDLEBURG TAPESTRY SEGMENT

- Median age: 36.1
- Education: 65% with a high school diploma or some college.
- Unemployment rate lower at 4.7% (Index 86).
- Labor force participation typical of a younger population at 66.7% (Index 107).
- Traditional values are the norm here—faith, country, and family.
- Prefer to buy American and for a good price.
- Comfortable with the latest in technology, for convenience (online banking or saving money on landlines) and entertainment.

GREEN ACRES TAPESTRY SEGMENT

- Median age: 43.9
- Education: More than 60% are college educated.
- Unemployment is low at 3.8% (Index 70); labor force participation rate is high at 66.8% (Index 107).
- Income is derived not only from wages and salaries but also from self-employment (more than 13% of households), investments (27% of households), and increasingly, from retirement.
- They are cautious consumers with a focus on quality and durability.
- Comfortable with technology, more as a tool than a trend: banking or paying bills online is convenient; but the Internet is not viewed as entertainment.
- Economic outlook is professed as pessimistic, but consumers are comfortable with debt, primarily as home and auto loans, and investments.

SAVVY SUBURBANITES TAPESTRY SEGMENT

- Median Age: 45.7
- Education: 50.6% college graduates; 77.6% with some college education.
- Low unemployment at 3.5% (Index 65); higher labor force participation rate at 67.9% (Index 109) with proportionately more 2-worker households at 62.2%, (Index 120).
- Well-connected consumers that appreciate technology and make liberal use of it for everything from shopping and banking to staying current and communicating.
- Informed shoppers that do their research prior to purchasing and focus on quality.

SUBURBAN SATELLITES TAPESTRY SEGMENT

- Median age: 40.3
- Education: almost 40% have a high school diploma only (Index 140); 45% have college education (Index 73).
- Unemployment rate is 6%, slightly higher than the US rate.
- Labor force participation rate is 59.1%, slightly lower than the US.
- These consumers are more concerned about cost rather than quality or brand loyalty.
- They tend to be somewhat late in adapting to technology.
- They obtain a disproportionate amount of their information from TV, compared to other media.

EMERALD CITY TAPESTRY SEGMENT

- Median age: 37.4
- Well educated, these consumers research products carefully before making purchases.
- They buy natural, green, and environmentally friendly products.
- Very conscious of nutrition, they regularly buy and eat organic foods.
- Cell phones and text messaging are a huge part of everyday life.
- They place importance on learning new things to keep life fresh and variable.
- They are interested in the fine arts and especially enjoy listening to music.

PROFESSIONAL PRIDE TAPESTRY SEGMENT

- Median age: 40.8
- Professional Pride consumers are highly qualified in the science, technology, law, or finance fields; they've worked hard to build their professional reputation or their start-up businesses.
- These consumers are willing to risk their accumulated wealth in the stock market.
- They have a preferred financial institution, regularly read financial news, and use the Internet for banking transactions.
- These residents are goal oriented and strive for lifelong earning and learning.
- Life here is well organized; routine is a key ingredient to daily life.

Persons with Disabilities

Understanding the status of persons with disabilities will assist in planning facilities and locations for existing and future recreational and nonmotorized transportation activities. The Americans with Disabilities Act of 1990 (ADA) requires that all public services, including parks, recreation facilities, and nonmotorized transportation be subject to barrier-free requirements. The Act also requires that public recreation providers eliminate any eligibility requirements for participation in programs, activities, and services.

The type of disability and number of residents impacted will shape the design and accommodations made for them within the Northfield Township Parks and Recreation Master Plan. The US Census Bureau reports that approximately 9.8% percent of Northfield Township residents have a disability. The most prevalent disabilities within the population are ambulatory and cognitive ability difficulties, followed by independent living difficulty. Ambulatory difficulties encompass serious difficulties with walking or stairs, issues that limit physical activity, leading to steeper decline in health. Providing accessibility options for these difficulties in planning for parks and recreation activities could result in positive health outcomes for a population that already experiences great difficulty on a day-to-day basis.

Accommodations could include introducing small open space areas near areas with high concentrations of independent living difficulties for passive recreation access, ramps or pavement improvements in order to ease accessibility concerns for those who suffer from ambulatory difficulties, or by installing audible and visually assisted crosswalks that are conscious of those who may be visually or hearing impaired.

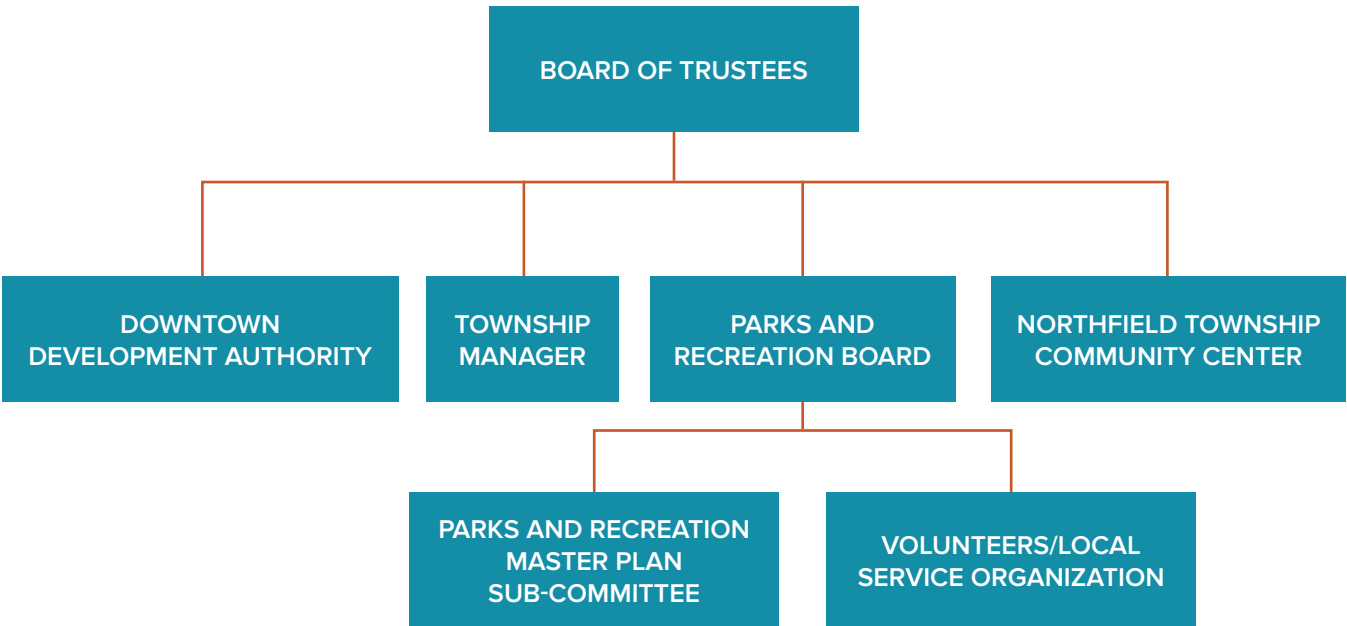
ADMINISTRATIVE STRUCTURE

Operations, maintenance, and improvements to Northfield Township’s parks and recreation facilities are collaboratively managed by Township administration, the Board of Trustees, and the Parks and Recreation Board.

SPECIAL THANKS!

The Township appreciates the contributions of the below organizations in the success of parks and recreation within Northfield Township. These organizations include but are not limited to:

- Volunteers
- Local service organizations
 - » Kiwanis Club of Whitmore Lake
 - » Kiwanis Key Club
 - » Whitmore Lake 4th of July Committee
 - » Whitmore Lake Rod and Gun Club
 - » Northfield Human Services
- Northfield Township Community Center
- Community Schools
 - » Whitmore Lake Public Schools
 - » Ann Arbor Public Schools
 - » South Lyon Schools
 - » Dexter Community Schools
- Northfield Township Area Library



Administrative Structure Detail

1

BOARD OF TRUSTEES

The Township Board is elected by the people and has a fiduciary responsibility to the Township. The Township Board comprises seven members: Supervisor, Clerk, Treasurer, and four Trustees. The Township Manager works with the Township board to enact policies and to govern Northfield Township efficiently and effectively.

2

DOWNTOWN DEVELOPMENT AUTHORITY (DDA)

The DDA is appointed by township board to undertake public improvements and activities that have the greatest impact in strengthening the business district. Since some of the park facilities within Northfield Township are located within the DDA's District, the DDA has an interest in and responsibility for the promotion and enhancement of recreation.

3

TOWNSHIP MANAGER

Designated as the spokesperson for the Township. Oversees the day to day administration of Northfield Township Government. The Township Manager is the chief appointed executive and reports directly to and works with the Township Board and various departments of the Township.

4

PARKS AND RECREATION BOARD

Oversees parks and recreation efforts in the community and leads the master planning process. Establishes a vision for current and future long-range programs for the development of park areas and facilities. Develops projects that have the capacity to provide a tangible benefit to the community.

5

PARKS AND RECREATION MASTER PLAN SUB-COMMITTEE

Comprises four members of the Parks and Recreation Board as a focus group for developing the Parks and Recreation Master Plan.

FUNDING

Funding for the Northfield Township parks and recreation programming and facilities comes primarily from the general fund, while the Whitmore Lake Community Aquatic facility funding is through administered by Whitmore Lake Public Schools and paid by Township community members. Other funding sources and revenues come from grants awarded for parks and recreation projects, all of which the Township continues to pursue donations from individuals as well as businesses and community organizations.

The Township has invested in land acquisition for the purpose of providing the community more opportunity for recreation and open space. In 2016, the Township purchased 23 acres of land alongside Whitmore Lake, herein referred to as North Village. The purpose of investing in and developing North Village was to address public amenities, lake views, natural features, and create connections to the downtown area. Through this effort, the Township continues to prioritize utilizing the community's natural features and upgrading parks and recreation facilities when fiscally feasible.

Table 3 details Northfield Township's Parks and Recreation budget expenditures.

BUDGET

TABLE 3. PARKS AND RECREATION BUDGET EXPENDITURES 2017-2020

EXPENDITURE CATEGORY	2017-2018 AMENDED	2018-2019 ACTUAL	2019-2020 AMENDED	2019-2020 ACTUAL
Supplies	\$208	\$123	\$0	\$0
Park Maintenance	\$322	\$1,489	\$5,000	\$2,775
Community Center	\$107,866	\$114,799	\$268,764	\$137,841

GRANT HISTORY

TABLE 4. GRANTS RECEIVED

PROJECT TITLE	PROJECT YEAR	GRANT AMOUNT	SITE ELEMENTS	2020 CONDITION OF ELEMENTS
Urban County Grant	2019-2021	\$91,000	Northfield Township Community Center	Parking lot, lighting and landscaping
Senior Café Grant	2020-2021	\$19,100	Northfield Township Community Center	Provides nutritionally sound meals to frail older adults
KABOOM! and the Ralph C. Wilson, Jr. Foundation	2020	\$47,550	Barker Road Non-Motorized Pathway	Play path of musical instruments, mural, games and activities (hopscotch, tic-tac-toe, etc.)
Main Street Sidewalk	2015	\$60,000	Main Street Sidewalk from Township Offices to the Whitmore Lake School property with a crosswalk	Provide safe, walkable connectivity and crosswalk to school
Barker Road Non-Motorized Pathway – Phases 1, 2 and 3	2011-2016	\$750,000	Barker Road from Whitmore Lake Elementary School	Provide safe, walkable connectivity for neighborhoods and school

Strategies to Funding

To accomplish the recommended action plan during the next five years, the Township will need adequate funding. Since the Township established the Parks and Recreation Board in 2016, the Township provided a limited budget for park and recreation management. Since the acquisition of North Village and the dedication of Northfield Township Community Park, the need to seek outside for funding source has become a priority. The following strategies are recommended in order to proceed as planned:

APPLY FOR FEDERAL FUNDING

At the federal level, Michigan Department of Transportation (MDOT), in conjunction with Southeastern Michigan Council of Government (SEMCOG) funds the Transportation Alternatives Program (TAP), which offers funding opportunities for transformative community projects that increase walkability, bikeability and water quality. A minimum of 20 percent local match is required for proposed projects with online application submissions.

STATE FUNDING

At the state level, the **Michigan Natural Resources Trust Fund (MNRTF)** and the **Land and Water Conservation Fund (LWCF)** are funding sources for parkland acquisition and development. Also through the **Michigan Department of Natural Resources (MDNR)**, the **Recreation Passport grant program** offers state funding to local units of government.

The **MNRTF** provides funding for the purchase and development of parkland for natural resource-based preservation and recreation. Grant proposals must include a local match of at least 25 percent of the total project cost. Acquisition projects have no minimum or maximum. For development projections, the minimum funding requests are \$15,000 and the maximum requests are \$300,000 in 2021. Applications are due April 1st each year. Grant award notification is expected to occur annually in December.

The **LWCF** is a federal appropriation to the National Park Service, which distributes matching grants to the MDNR for development of outdoor recreation facilities. The focus of the program has recently been on meeting community recreation needs such as playgrounds, picnic areas, skate parks, ball fields, soccer fields and walking paths. Minimum grant requests are \$30,000 and maximum grant requests are \$500,000 in 2021. The criteria used to evaluate the projects is Need for the Project, Site and Project Quality, Applicant History, Financial Need of the Applicant, Quality of the Overall Park Design, Project Facilities/Scope Items and Universal Access Design. **Applicants must have a DNR-approved community five-year recreation plan to be eligible.**

The **Recreation Passport grant program** offers funding for the development of outdoor public recreation facilities for local units of government. The minimum funding requests are \$7,500 and the maximum requests are \$150,000 in 2021. At least 25 percent of the cost of the project is required as match from applicants. Applications must be submitted online to MiRecGrants by April 1 each year. Grant award notification is expected to occur annually in December.

APPLY FOR OTHER GRANT FUNDING

Through the **Washtenaw County Parks and Recreation, Connecting Communities** is a competitive grant program that provides supplemental funding for the development of non-motorized trails or similar projects. Projects should support the Parks and Recreation Commission's primary goal of providing valuable, non-motorized connections between communities and activity centers thus offering a healthy alternative for recreation, transportation, fitness, and energy conservation. The program is open to all municipalities and public entities in Washtenaw County. In 2016, the residents of Washtenaw County passed a four-year road and trails millage of which 20% will be allocated to WCPARC for the development of non-motorized trails, including the Border-to-Border Trail. The Parks and Recreation Commission voted to use 1/3 of its allocation to reinstate the Connecting Communities initiative. Currently, the program is active from 2017 through 2020—the Township will monitor if additional funding will be available in the future.

Through the **Michigan Health Endowment Fund**, the Health Fund emphasizes eight focus areas. Wellness and Fitness supports evidence-based fitness and wellness programs targeted at children and older adults with the potential to inspire lasting behavior and culture change.

Priorities include:

- Physical activity initiatives such as adaptive sports
- Initiatives that emphasize reduced screen time in early care and education settings
- Efforts to coordinate and promote existing community assets for physical activity.

Proposals are to include the following guidelines:

- Proposals cannot exceed 20% of your organization's budget;
- Administrative/indirect costs cannot exceed 20% of proposal budget;
- Grants can only be one or two years in duration, but the total request is limited to \$100,000;
- Grassroots organizations, small and medium size nonprofits are encouraged to apply.

The National Fitness Campaign is a quality-of-life consulting firm that partners with cities, schools, corporations and design firms to fund and build outdoor Fitness Courts® to improve the quality of life in America. In 2018, the Campaign launched in 100 cities across the United States. In partnership with Priority Health, NFC goal in Michigan is to have 15 Fitness Courts® constructed in 2021. The total cost of the Fitness Courts® is \$150,000 with Priority Health funding \$50,000 and the Township will fund \$100,000 plus the cost of the concrete slab. Final decision for funding is February 1, 2021 with a requirement development completion within 18 months. For 2022 funding, targeted considerations will start in May 2020.

SEEK OTHER SOURCES OF FUNDING

Safe Routes to School (SRTS) is both an international movement and federal program to make it safe, convenient, and fun for children, including those with disabilities, to bicycle and walk to school. The two types of grants are as follows:

- Mini-grants are a great way to make immediate inroads with the Safe Routes to School movement by building a culture of walking, biking, and rolling at your school. These grants allow schools and communities to create programs that educate, encourage, and engage students to create healthier habits and reduce traffic around schools. Funding of up to \$10,000 per school is available, with a maximum of \$100,000 per applicant for 10 or more schools. A maximum of \$5,000 should be set aside for a Program Coordinator and/or personnel work, with an additional \$5,000 eligible for non-personnel expenses. Applications are competitive and funding is limited. The 2021 Mini Grant RFP submission deadline is March 5, 2021. Michigan Fitness Foundation (MFF) aims to notify applicants in May about the status of their funding proposals.
- Applying for a Major Grant requires that the Township embarks upon an in-depth planning process before applying for an application. This process can take anywhere from 6 months to a year and will mean collaborating with community schools and residents to complete – a survey is a major portion of the grant process. Grant requests can be up to \$220,000 per school for infrastructure funds, and up to \$10,000 per school in programming (non-infrastructure) funds. For 2021, upcoming rolling application deadlines vary and can be viewed on the website (<https://saferoutesmichigan.org/major-grant/>).

Community Forestry Grant program, through MDNR, addresses the urban forestry needs of municipal governments, schools, nonprofit organizations and volunteer groups throughout Michigan. Typical project categories are: management and planning, education and training, tree planting, and Arbor Day. All tree planting projects must occur on public land or land open to the public. Grant requests may be up to \$20,000, as determined by project category. Fiscal year 2022 applications are due Sept. 30, 2021. Projects are required to be completed in approximately one year (October through September).

The **DTE Energy Foundation Tree Planting grant program** focuses on increasing the number of properly planted, established and maintained trees within the service territory of DTE Energy. Tree planting projects such as park, right-of-way, city streets, nature study areas, school grounds planting and neighborhood revitalization projects. All trees must be planted on public land or land open to the public. Grant requests may be up to \$4,000 each. Applications are due annually each Spring (June-July).

The **Public Spaces Community Places** is a collaborative effort by the Michigan Economic Development Corporation (MEDC), the Michigan Municipal League, and Patronicity, a crowd funding platform where local residents can be part of the development of strategic projects in their communities, backed with matching grants from MEDC. Communities, non-profits, and municipalities can submit projects by applying for a Patronicity crowd granting campaign. Public Spaces Community Places projects include such efforts as Public Plaza & Green Space Development, access to public amenities, Farmer's Markets, Community Kitchens, Pop-Up Retail/Incubator Space, Alley Rehabilitation, and any other place based (or public space improvement) projects.

Kiwanis International can assist the reach of Kiwanis Clubs funding impact in the Township through the Kiwanis Children's Fund by addressing unmet needs affecting children.

Eligible projects must:

- Be Kiwanis-led and 50% of the project must be completed by the local Kiwanis Club.
- Projects must reoccurring each year.
- 25% of the funding needs to come from the local Kiwanis Club and will provide no more than 40% of total funding from the Children's Fund.
- Must have at least one non-Kiwanis monetary funding partner, such as a local business, church, school, non-profit or other community organization.
- The project grant money must be spent within 12 months of when the grant was awarded.

KABOOM! and the **Built to Play** initiative, supported by the Ralph C. Wilson, Jr. Foundation, offers the Play Everywhere Design Challenge where the focus is on the safety and well-being of children. This design challenge awards \$1 million to communities building landmark playscapes that provide children with equitable opportunities to play. To be eligible, the project must be within Southeast Michigan counties, which includes Washtenaw county. The deadline to complete the full application is October 30, 2021 for January 2023 project.

Millage: While there is no Parks and Recreation millage in Northfield, there could be possible funding needs for maintenance for future parks. Through a county millage, the Whitmore Lake Preserve that operates through the Washtenaw County Parks and Recreation and was acquired through the Natural Areas Preservation Program. The Parks and Recreation Commission, as part of its master planning process, is working on categorizing what assets are available and putting strategies in place to make appropriate changes and updates for Northfield Township.

This page intentionally left blank.



NATURAL RESOURCES

Northfield Township's environmental setting is critical when planning for recreation facilities and the connections between them. Northfield Township's environmental features, such as lakes and woodlands, are a resource for Township residents and those who live in the region to enjoy. Natural features make Northfield a standout destination in Washtenaw County.

The location, topography, and existing environmental features all influence the types of facilities, amenities, and programs that are best suited for implementation. In addition, environmental quality significantly affects the quality of life in a community. Visual aesthetics, clean water, and fertile soil all enhance the public health and economy. Therefore, a thorough plan requires that the condition of the environment be considered in future decisions and promote best practices for the stewardship of the land.

The Water, Land, and Parks chapter describes Northfield Township's parks and recreation and natural resources features. The existing recreational facilities and land devoted to such uses then provides the framework for analysis and comparison to MDNR standards highlighting where the Township is excelling or may have room for improvement.

The Township wishes to improve environmental quality, connectivity, walkability, parks and recreation facilities, and the lakefront through the goals and objectives identified within this plan.

NATURAL FEATURES FRAMEWORK

The natural features framework highlights the Township's plethora of environmentally significant features. Northfield Township's rural atmosphere provides vast agricultural lands, woodlands, lakes and streams, providing a scenic escape from neighboring urban areas.

AGRICULTURAL LANDS

Northfield Township's land is 29% agricultural. With the exception of a few low density residential areas and recreation/conservation areas, the eastern and southern portions of the Township are designated for agricultural use. The western portion of the Township, especially near Whitmore Lake and Horseshoe Lake, comprises the commercially and residentially developed area of the Township. The Township aims to protect existing farmland, open space, and natural resources provided within the agricultural portions of the land.



LAKES

Northfield Township is home to four lakes: Whitmore Lake, Horseshoe Lake, Wildwood Lake, and Lawton Lake. Whitmore Lake and Horseshoe Lake are two of the Township's most well-known environmental assets. One of the highest density areas in the Township includes Main Street and East Shore Drive, which front Whitmore Lake. Whitmore Lake and Horseshoe Lake provide environmental and entertainment value. Lawton Lake is part of the Whitmore Lake Preserve located off of 7 Mile Road and operated by Washtenaw County Parks & Recreation Commission. Surrounding residents have the opportunity to recreate on Whitmore Lake year-round by boating, fishing, snowmobiling, ice fishing, and skating.

WETLANDS

Woodlands and wetlands make up approximately 27% of Northfield Township. Wetlands include environmental land features where water is found, either on the surface or near the surface. According to the U.S. Fish and Wildlife Service, in order to determine if a wetland is present, land must have one or more of the following three attributes: (1) at least periodically, the land supports predominantly hydrophytes (plants specifically adapted to live in wetlands); (2) the substrate is predominantly undrained hydric (wetland) soil; and (3) the substrate is nonsoil and is saturated with water or covered by shallow water at some time during the growing season of each year.

Wetlands hold an important role in the ecology of the environment. These water features provide habitat for fish and wildlife. Wetlands also maintain and stabilize groundwater supplies, reduce dangers of flooding, control erosion, and improve water quality. Wetlands cover a large portion of the Township and are deemed a prized environmental resource by residents. In the area east of Horseshoe Lake, both the Township and Horseshoe Lake Corporation (the property owner association for land around Horseshoe Lake) have purchased wetland areas to

ensure their protection, as the surrounding lands are quite sensitive and the wetlands are needed for protection of flood-prone areas.

TREES AND TRAILS

Parks, recreation, and open space occupy 2% of the land within Northfield Township. Mature tree canopies are a major natural feature within the Township. Fortunately, Northfield Township has held onto a large portion of tree coverage throughout the years, and boasts multiple areas where trees provide scenic views. Trees on either side of East Shore Drive provide picturesque shading between the public right-of-way and Whitmore Lake. The Seven Mile Preserve comprises 50 acres of open space home to trees, trails, and wetlands. Northfield Woods Preserve also includes woodlands, wetlands, and 10 acres of farmland.

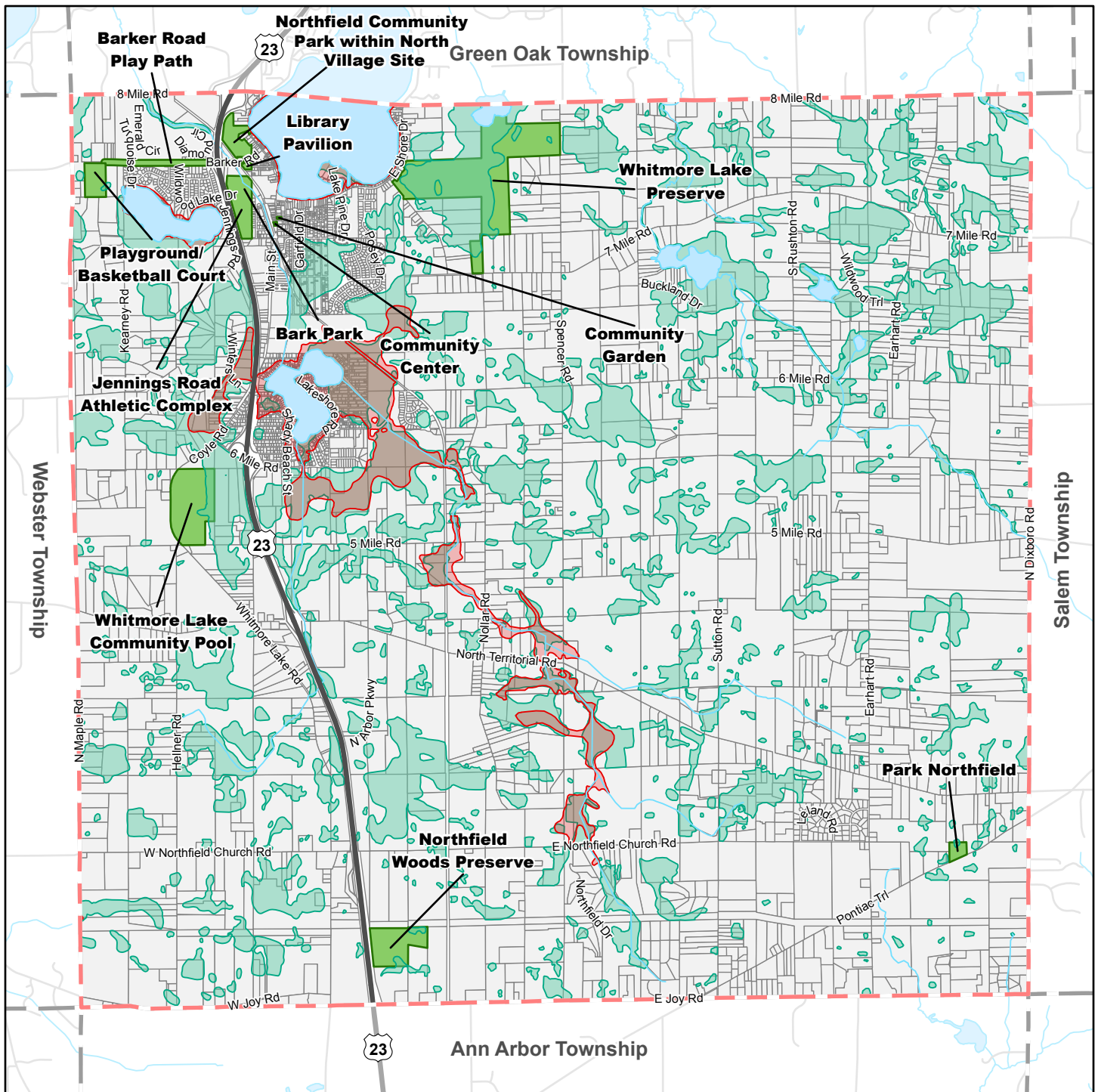
TOPOGRAPHY

The topography of Northfield Township is relatively flat, which provides for rich agricultural land. According to SEMCOG, the low-lying areas of the Township include approximately 6,236 acres of grassland and shrubs.

SCENERY

Significant views of Northfield Township's natural beauty can be found in almost every corner of the Township. The lakes, trees, and trails contribute to resident's quality of life, and provide a destination experience to those visiting. The Township aims to encourage sustainable use of its natural resources, and is in process of implementing a variety of projects, such as sustainable recreational development along the lakefront. This development will not take away from the natural beauty of the area, but contribute to its scenery and provide community members with an opportunity to take part in enjoying the lakefront.





Natural Features Map

Northfield Township,
Washtenaw County, Michigan

January 13, 2021

LEGEND

- Northfield Township Boundary
- Other Municipal Boundaries
- Lakes and Rivers
- 100-Year Floodplain
- Wetlands
- Northfield Township Recreation Facilities



0 0.5 1
Miles

Basemap Source: Michigan Center for Geographic Information, v. 17a. Source: Northfield Twp 2020. McKenna 2020.

NORTHFIELD TOWNSHIP RECREATION INVENTORY

Northfield Township encompasses 23,493 acres of land (SEMCOG Land Cover in 2020) with 85% (22,246 acres) being agriculture, open space and water features. In total, Northfield Township features twelve (12) public recreation facilities, with approximately 220 acres of land. The Township's parks and recreation facilities each have different types of amenities and opportunities for a wide variety of recreation experiences. The following inventory and the adjoining Recreation Facilities and Service Area Map details the amenities currently available at each facility and the facility's respective location.



Barker Road Non-motorized Pathway and Play Path

Classification: Park Trail

Length: 1.0 miles

Accessibility Ranking: 4

Located in the northwest portion of the Township, along Barker Road, the Barker Road Non-motorized Pathway and Play Path serves the Downtown Whitmore Lake area. Stretching from the old Township hall to the Whitmore Lake Elementary School, the path features musical instruments, hidden painted rocks, custom benches, and interactive games, such as hopscotch and tic-tac-toe. The Barker Road Play Path was financed through an award from a community-driven design competition as a Play Everywhere project.

Community Garden

Classification: Mini-Park

Area: 0.25 acres

Accessibility Ranking: 4

Located in the northwest portion of the Township, across Main Street from the Northfield Township Community Center, the Community Garden is a public space reserved for residents to grow fruits and vegetables using raised beds. There is a garden usage fee of \$10 per plot for both residents of the Township and non-residents.

ACCESSIBILITY RANKINGS

Providing accessible facilities that may be utilized by persons with varied disabilities is one of Northfield Township's community goals. Each Township owned recreation facility was evaluated for compliance to the ADA Standards of Accessible Design in the fall of 2020. Recreation facilities are rated on a 1-5 scale, as defined by MDNR:

1. None of the site elements meet ADA accessibility guidelines.
2. Some of the site elements meet ADA accessibility guidelines.
3. Most of the site elements meet ADA accessibility guidelines.
4. The entire recreation facility meets ADA accessibility.
5. The entire recreation facility was developed / renovated using the principles of universal design.

The above facilities have ratings of 2, 3, and 4. Due to some of the facilities such as the Whitmore Lake Preserve being mainly wetlands, marshes, and open space, many of the entrance routes to these facilities are not paved. While most of the above facilities include elements that are handicapped accessible, many of the routes to reach such facilities are lacking in principles of universal design.



Northfield Township Community Park

Classification: Community Park

Area: 10-12 square miles

Accessibility Ranking: 2

Located in the northwest portion of the Township, with frontage on Whitmore Lake, Northfield Township Community Park is within North Village, which is a yet-undeveloped park that will provide added public amenities, lake views, natural features, connectivity, parking, site access, and community vitality to the Downtown Whitmore Lake area. In future development, mixed use buildings with restaurants, retail, and residential buildings in the back along Main Street may be included within North Village to subsidize the public amenities of the park.



Northfield Township Community Center

Classification: Community Park

Area: 0.34 acres

Accessibility Ranking: 4

Located in the northwest portion of the Township, the Community Center is run by a director and a small group of volunteers to offer programming and activities for residents regardless of age. Examples of the programming available are fitness classes (for children, adults, and seniors), presentations, art classes, craft workshops, trips, karaoke nights, outdoor movies, luncheons, delivered meals, and special events.



Whitmore Lake Bark Park

Classification: School Park

Area: 1 acre

Accessibility Ranking: 4

Located in the northwest portion of the Township, at the back end of the Jennings Road Athletic Complex, the Whitmore Lake Bark Park is a safe place for residents to gather and exercise their dogs off-leash within a fenced area. The Bark Park is open daily all year long, from dawn to dusk.



Whitmore Lake Elementary School Basketball Court

Classification: School Park

Area: < 1 acre

Accessibility Ranking: 3

Located in the northwest portion of the Township, on the nearly 20-acre Whitmore Lake Elementary School campus, the basketball court serves the residents of the Downtown Whitmore Lake area.



Jennings Road Athletic Complex

Classification: School Park

Area: 32 acres

Accessibility Ranking: 4

Located in the northwest portion of the Township, the Jennings Road Athletic Complex includes a football field, and track and field facility, spectator stands, a concession building, a storage and observation building, a baseball/softball field, two youth baseball fields, a large grass practice area, a large play structure designed for children (3-12 years old), the Whitmore Lake Bark Park (see above), a wooded area with a stream, and rustic trails.



Playground at Whitmore Lake Elementary School

Classification: School Park

Area: < 1 acre

Accessibility Ranking: 4

Located in the northwest portion of the Township, on the nearly 20-acre Whitmore Lake Elementary School campus, the playground serves the residents of the Downtown Whitmore Lake area.



Community Recreation Department at Whitmore Lake Public Schools

Classification: School Park

Area: 81 acres

Accessibility Ranking: 4

Located in the northwest portion of the Township, on the approximately 80-acre Whitmore Lake High School campus, the Community Pool, Walking Track, and other facilities serve the residents of the Northfield Township. Through a community millage, the Whitmore Lake Community Aquatic Facility is a 228,000-gallon regulation-sized swimming pool featuring six 25-yard lanes, two diving boards, a wading pool with ramp entry and a bench with therapeutic jets.



Northfield Township Area Library Pavilion

Classification: Community Park

Area: 1.6 acres

Accessibility Ranking: 4

Located in the northwest portion of the Township on Barker Road, the Northfield Township Area Library has over 7,200 patrons. In addition to books, the library provides community access to computers, wifi, printing and a variety of programming for children and adults.



Northfield Woods Preserve

Classification: Regional Park

Area: 48 acres

Accessibility Ranking: 3

Located in the southwest portion of the Township, on Northfield Church Road, the Northfield Woods Preserve is a nature preserve with a high-quality woodlot, wooded wetlands, about 10 acres of active farmland, and an area in transition from former farm fields to woods. The preserve is operated by Washtenaw County Parks & Recreation Commission.



Park Northfield

Classification: Regional Park

Area: 7.7 acres

Accessibility Ranking: 3

Located in the southeast portion of the Township, on Pontiac Trail, Park Northfield is a small, roadside park with a lowland hardwood forest, a small marsh at its western edge, a large rolling open field, and a natural oak hedgerow along its eastern border. Park Northfield also features an open play field and two picnic tables. Dogs are allowed. The park is operated by Washtenaw County Parks & Recreation Commission.



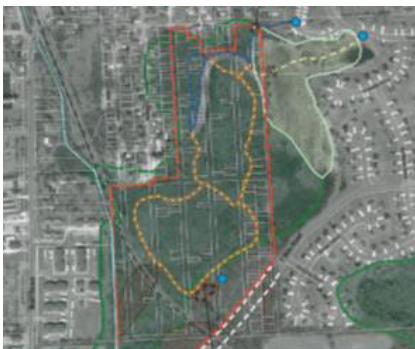
Whitmore Lake Preserve

Classification: Regional Park

Area: 10 acres [253 acres]

Accessibility Ranking: 3

Located in the northwest portion of the Township, on 7 Mile Road, Whitmore Lake Preserve is a nature preserve with approximately 2.4 miles of trails, along with meadows, mixed hardwood forest, wooded wetlands, and scenic views over a large marsh and small lakes. The preserve is operated by Washtenaw County Parks & Recreation Commission.



7 Mile Road Preserve

Classification: Community Park

Accessibility Rating: Not Rated

Located east of the Northfield Township Public Safety Building, off of 7 Mile Road, is a future nature preserve with approximately 63 acres of wooded wetlands, marshes, and open land. The Township continues to acquire undeveloped lots in the Summer Home Subdivision.

PRIVATELY-OWNED RECREATIONAL FACILITIES

Northfield Township has a number of privately-owned, commercial recreational facilities within its borders and nearby in neighboring communities. These facilities offer a variety of recreational opportunities for the community.

Golf Courses

1. Links at Whitmore Lake, 1111 Six Mile Road.

This 6,257-yard, 18-hole William Newcomb public course covers 254 acres, nearly one-half of which are protected wetlands. The front nine is a beautiful uplands course, with tee-to-green bent grass. The back nine includes five boardwalks (one nearly a quarter-mile long), and acres of wetlands. The course also offers a clubhouse suitable for receptions and group events, a driving range, putting greens, teeing decks placed in the middle of marshland, golf carts, and opportunities to enjoy wildlife.

2. Rolling Meadows Country Club, 6484 Sutton Road.

This is a 6,474-yard 18-hole public golf course, designed by William Shively. It includes a putting green, golf carts and a small pavilion.

3. Indian Trail Golf Center, 5440 Earhart Road.

This is a golf driving range with open and covered tees.

Marinas

1. Mac's Marina, 9876 Main Street.

This is a full service marina with 30 rental dock slips, boat rentals, a service center for boats, snowmobiles and ATVs, and food service. Mac's Marina also hosts the annual Michigan Pond Hockey Classic.

2. Driftwood Marina, 9594 Main Street.

The marina has 30 rental boat slips.

Stables

1. Wildwind Equestrian Center, 3935 Seven Mile Road.

The center offers lessons, a hunter jumper schooling barn, a show team, summer and school break camps, Tiny Tots, boarding, training, sales, leasing and a home school program.

2. Odyssey Training Center, 6105 Walsh Road.

Dedicated to the sport of carriage driving, the Odyssey Training Center is situated on 12 acres, and includes amenities such as 28 oak stalls, 3 grooming areas, a wash rack, a tack room, a carriage house, a 75' x 110' indoor arena, a 80' x 375' outdoor arena, a wood wall round pen, a custom feed, a daily pasture or paddock turnout, and a clubhouse with kitchen, bath, and lounge. There are miles of groomed country roads for driving. The center offers lessons, training, conditioning, showing, coaching, sales, consulting, clinics, outfitting, and evaluations.

3. Double H Equestrian Center, 1138 Five Mile Road.

The center offers training, lessons, boarding and leasing.

4. Turning Point Farm, 4001 Seven Mile Road.

This private boarding facility on 60 acres features indoor and outdoor riding arenas, a quarter mile track with event field and an outdoor jumping arena. It caters to many riding disciplines, with a focus on dressage.

5. Great Escape Stables, 8266 S. Rushton Road.

This stable is a lesson, boarding and training facility specializing in hunters, jumpers and equitation, and is a United States Pony Club Riding Center. Also offers birthday party rentals, horse showing, and day camps.

Miscellaneous Private Recreation

A variety of private enterprises offer further recreational opportunities. Others provide enhancements and supplies for sporting and recreational activities within the community.

1. Rick's Bait Shack

Offers fishing supplies and tackle, bait, and fishing and hunting programs for children.

2. Fine Arts Academy of Dance, 238 Jennings Road.

Offers classes in dance, martial arts, music, tumbling, recreational competitive cheer and musical theater.

3. German Park Recreation Club, 5549 Pontiac Trail.

This facility consists of several picnic areas/pavilions and concession/kitchen buildings, a covered band shelter, indoor restrooms, and a large parking lot. The club hosts several picnics during the summer months. The facilities are also rented out to groups.

4. Whitmore Lanes & Lounge, 9455 Main Street.

Family owned 18-lane bowling center with food service.

5. Whitmore Lake Rod and Gun Club, 11150 Lemen Road.

As a private club, the facilities promote recreation and hunter safety to members.



Regional Recreational Resources

1. Independence Lake County Park, 3200 Jennings Road, west of Kearney Road, in Webster Township.

This park is located on 400 acres and includes 3 miles of hiking, biking and blading trails, picnic areas, beach, nature trails with an observation tower, disc golf course, boat launch and pavilions. Blue Heron Bay, a major water park featuring a splash pad with three separate areas for toddlers, families and teens as well as a two-story water slide with two flumes, one enclosed and one open, was opened in 2013. The splash park is universally accessible. Other activities include fishing, swimming, geocaching, cross-country skiing, and snowshoeing.

2. Bandemer Park, located along the Huron River at Whitmore Lake Road and Barton Drive.

This Ann Arbor city park has 35 acres of nature trails and footpaths, a dirt bike course, picnic areas with grills, an accessible canoe dock, a fishing deck, shelter, restrooms and benches.

3. Olson Park, an Ann Arbor city park located at the corner of DhuVarren Road and Pontiac Trail south of M-14.

This 54-acre parcel includes 5 miles of hiking and mountain bike trails, picnic area, basketball courts, paved trails, and an off-leash dog play area. Significant natural features include a pond, wetlands, creek and woods. Future plans include soccer fields, game courts, more bike trails, and the restoration of native plant communities and butterfly and bird habitat.

4. Manly W. Bennett Memorial Park, located along both the east and west sides of Merrill Road in Hamburg Township.

This 384-acre Hamburg Township park includes basketball courts, baseball fields, softball fields, T-ball fields, soccer fields, model airplane runway/flying field, picnic area, biking and hiking trail, a fishing dock, and the Mike Levine Lakeland Trail, part of the Great Lake to Lake Trail.

5. Huron Valley Rail Trail System.

Extending along the former Grand Trunk Railroad from the City of South Lyon, through Lyon Township and into Milford Township, the trail system provides 10 miles of hiking, biking and blading trail connecting South Lyon to Kensington Metropark, Island Lake State Park, Wixom and the Oakland County Trail System. As this Oakland County network is completed, this trail will connect to Proud Lake Recreation Area (4,700 acres), Pontiac State Recreation Area (3,750 acres), Holly State Recreation Area (8,000 acres), Highland Recreation Area (5,900 acres), Ortonville Recreation Area (5,400 acres), Bald Mountain Recreation Area (4,650 acres) and Stony Creek Metropark (4,500 acres).

6. Delhi Metropark (53 acres), Dexter-Huron Metropark (122 acres), Hudson Mills Metropark (1,550 acres).

These three Metroparks (operated by the Huron-Clinton Metropolitan Authority, a regional special park district encompassing Wayne, Oakland, Macomb, Washtenaw and Livingston Counties) are all located on the Huron River within 2 to 6 miles west of Northfield Township. All provide picnic facilities and pavilions, nature activities, canoeing, kayaking, river fishing, ball fields and play areas. In addition, Hudson Mills has disc golf, 18 holes of regular golf and paved hike, bike and blade trails.

7. Huron Meadows Metropark, located at Maltby and Rickett Roads in Brighton Township.

This 1,540-acre park provides an 18-hole golf course, softball field, soccer field, volleyball court, geocaching, picnic and nature areas, playground, restrooms, rental shelter and five miles of hiking trails. Water sports include boat and canoe rentals, and fishing. Four miles of cross-country trails and ice fishing are available in the winter.

8. Kensington Metropark, 4570 Huron River Parkway, in Milford.

The park's 4,481 acres includes 10 miles of bridle trails, 12 miles of ski trails, 10 miles of hiking trails, an 18-hole golf course, a 27-hole disc golf course, bike trails, picnic areas, play areas, baseball diamonds, geocaching, a nature center, and a farm center. Kent Lake has two beaches for swimming, the Splash 'n Dash waterpark, the Island Queen II boat tour of the lake, boat rentals, paddle boarding and fishing. Winter sports include ice fishing, cross-country skiing, snowboarding, ice-skating, and tobogganing.

9. Brighton Recreation Area, 6360 Chilson Road, Howell.

This 5,000-acre area provides 18 miles of hiking, biking, skiing, snowmobile and bridle trails. Other amenities include camping, hunting, fishing, an ADA accessible beach, an ADA accessible boat launch/dock, canoe.

10. Mike Levin Lakelands Trail State Park, Livingston and Ingham Counties.

The Trail State Park is a 34-mile-long linear trail that stretches between Ingham and Livingston counties and passes through woods, pastures, picturesque wetlands and by the beautiful Huron River. In 2018, parking and Trail Access was developed to reach the eastern trailhead on Hamburg Road from US 23 heading north, take Exit 53 toward Hamburg/Whitmore Lake. This multiple-use trail suitable for biking, walking, running and equestrian use.

RECREATION SYSTEMS ANALYSIS

Comparison to State and National Standards

Comparing the adequacy of Northfield Township’s parks and recreation facilities to national standards is important in identifying needs. The type of parks and their location, number of amenities, and distribution throughout the Township are all components that are assessed together as a recreation system analysis. The following comparisons are made between Northfield Township and the state and national standards for service areas, acreage, and number of facilities.

Due to assistance from community members and Township staff, Northfield Township has a strong parks and recreation system and has made considerable efforts towards improving recreational facilities. Through working side-by-side with community members, the Township is able to continue to improve community destinations.

Service Area Analysis

The Michigan Department of Natural Resources (MDNR) establishes a recommended service area for each park classification to identify areas in the community that are lacking access to recreation facilities. The service area boundary for each type of park is as follows:

- Mini-Park** 0.25-mile walkability service radius
- Neighborhood Park** 0.25 – 0.5-mile service radius
- Community Park** 1.0-mile service radius

Northfield Township is largely agricultural, resulting in parks that have greater separation than an urban or suburban community. Due to greater distances in between amenities, and use of motorized vehicles as the primary method of transportation, increasing the number of mini and neighborhood parks to mitigate the deficiency may not be a need within the community. However, the Township seeks to build upon the existing non-motorized pathways / trail systems to link neighborhoods to parks as a means to improve access and expand recreation opportunities for residents.

ACREAGE ANALYSIS

Table 5 compares Northfield Township’s park acreage to national guidelines for Michigan communities. As a statewide measure, these standards are general in nature and do not always reflect the quality of the facilities, the character of the community, or other local differences that impact community recreational facility needs. Thus, in evaluating the results, the actual conditions and trends present in the Northfield Township must be accounted for.

As a baseline indicator, Table 5 highlights the surpluses and deficiencies of all park land that is available to residents. There is a surplus of community park acreage available to Northfield Township residents, based on MDNR guidelines, there is a deficiency in neighborhood parks and mini-park acreage.

TABLE 5. NORTHFIELD TOWNSHIP'S RECREATION LAND ACREAGE ANALYSIS

FACILITY TYPE	NRPA GUIDELINE FOR MINIMUM ACREAGE PER 1,000 RESIDENTS	NORTHFIELD'S MINIMUM RECOMMENDED ACREAGE	NORTHFIELD'S ACTUAL ACREAGE	SURPLUS/ DEFICIENCY
Mini Parks	0.25 acres	2.19	.25	-1.94
Neighborhood Parks	1.00 acres	8.673	0	-8.673
Community Parks	5.00 acres	43.37	65.94	+22.57
Greenways/Trails	Variable	-	-	-

FACILITIES ANALYSIS

Additionally, MDNR recommends a certain number and type of recreation facilities for communities based on population size. Table 6 compares Northfield Township's recreation facilities to the MDNR standards. However, it is important to note that public school facilities, utilized by members of the community, are not substitutes for well-designed parks. They do not offer the full range of facilities normally provided in a park, such as restroom or picnic facilities and benches, for example. Additionally, school recreation sites are designed to meet the needs of school children and are generally not adequate for the recreational pursuits of the general public, ranging from organized sports for adults to passive recreational activities like hiking.

Northfield Township's 2019 estimated population is 8,673, which means the Township has mostly exceeded MDNR standards for several types of applicable recreation facilities for a population of this size. Northfield Township intends to continue its collaboration with the Northfield Township Public Schools and other entities to provide residents with greater access to recreational facilities.

TABLE 6. NORTHFIELD TOWNSHIP'S RECREATION AMENITIES STANDARD ANALYSIS

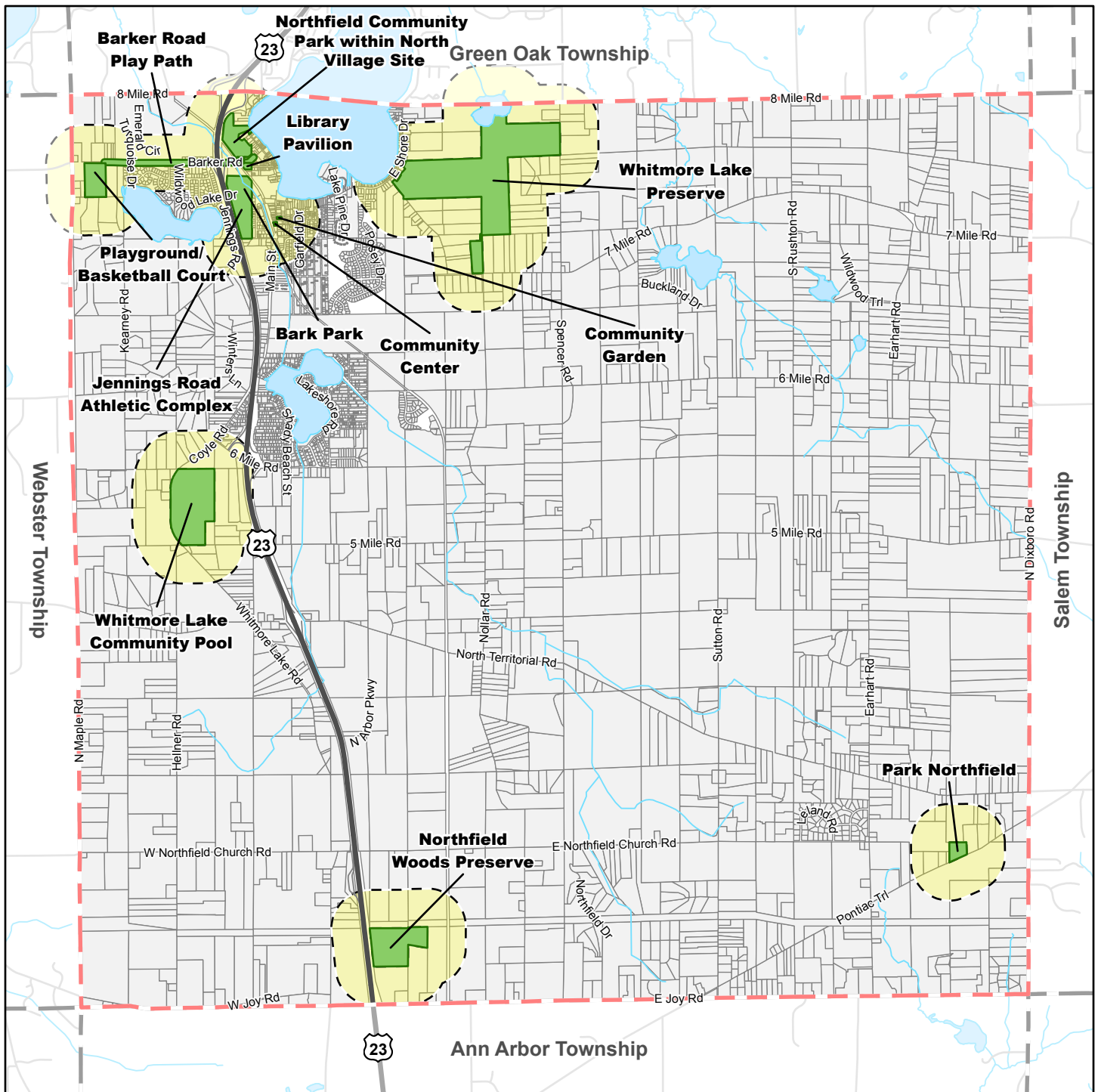
AMENITY TYPE	MDNR STANDARD CLASSIFICATION	NORTHFIELD TOWNSHIP'S RECOMMENDED AMENITY COUNT	SURPLUS/DEFICIENCY
Basketball court	1 per 5,000	1	+1
Baseball/Softball field	1 per 5,000	1	+2
Multi-Purpose Athletic Field	Minimum of 25 acres, with 40 to 80 acres being optimal	-	-
Soccer Field	1 per 10,000	1	-1
Tennis Court	1 per 2,000	4	-4
Greenway/Trail System	1 system per region	1	+4
Volleyball Court	1 per 5,000	1	-1
Beach	50 sq. ft. of land and 50 sq. ft. of water per user	-	-

**Based on the 2019 U.S. Census Bureau count of 8,673 individuals*

TABLE 7. NORTHFIELD TOWNSHIP AND REGIONAL RECREATION INVENTORY

		Barker Road Non-motorized Play Path	Whitmore Lake	Northfield Township Community Park	Jennings Road Athletic Complex	Northfield Township Area Library	Northfield Township Community/Senior Center	Whitmore Lake High School and Community Aquatic Facility	Whitmore Lake Elementary School	Whitmore Lake Preserve	7 Mile Road Preserve	Links of Whitmore Lake	Rolling Meadows	Independence Lake County Park	South Lyon Rail – Huron Valley Trail System	Mike Levine Lakelands Trails (Hamburg)
Passive Activities	Play Path	●							●							
	Picnicking			●		●	●							●		
	Playground			●	●				●					●		
Hiking & Bicycling	Unimproved Trail			●							●			●		
	Paved Trail	●		●	●					●	●			●	●	●
	Nature/Hiking Trail			●						●	●			●	●	●
	Equestrian Trail										●			●		
	Cross-country skiing										●			●		
	Snowmobiling															
Water Activities	Indoor Swimming							●								
	Swimming Beach			●										●		
	Boat Launch		●											●		
	Boat Rental		●													
	Canoeing/Kayaking		●	●										●		
	Shore Fishing		●	●						●				●		
	Fishing Pier			●										●		
	Boat Fishing		●											●		
Winter & Seasonal Activities	Ice Fishing		●	●						●				●		
	Ice Skating		●	●												
	Hunting									●						
Interpretive Facilities	Nature Center									●						
	Nature Study Area					●				●				●		
Court & Turf Games	Ball Fields				●			●								
	Soccer Fields				●			●								
	Fitness Court			●				●								
	Court Games							●	●							
	Disc Golf			●										●		
	Golf Course											●	●			
		Key: ● Future Project ● Current Project														

		Barker Road Non-motorized Play Path	Whitmore Lake	Northfield Township Community Park	Jennings Road Athletic Complex	Northfield Township Area Library	Northfield Township Community/Senior Center	Whitmore Lake High School and Community Aquatic Facility	Whitmore Lake Elementary School	Whitmore Lake Preserve	7 Mile Road Preserve	Links of Whitmore Lake	Rolling Meadows	Independence Lake County Park	South Lyon Rail – Huron Valley Trail System	Mike Levine Lakelands Trails (Hamburg)
Miscellaneous	Banquet/Event Facility					●	●	●	●			●	●			
	Exercise Programs						●	●								
	Dog Park				●											
	Bathrooms				●											
Camping	Rustic Campsite															
	Modern Campsite															
	Cabin Rental															
		Key: ● Future Project ● Current Project														



Recreational Facilities and Service Area

Northfield Township,
Washtenaw County, Michigan

January 13, 2021

LEGEND

- Northfield Township Boundary
- Other Municipal Boundaries
- Northfield Township Parcels
- Lakes and Rivers
- Northfield Township Recreation Facilities
- Quarter (1/4) Mile Walkability Radius



0 0.5 1
Miles

Basemap Source: Michigan Center for Geographic Information, v. 17a. Source: Northfield Twp 2020. McKenna 2020.





NORTHFIELD TOWNSHIP'S STRATEGY

04

THE VISION

Trends and needs identified in the Northfield Township community guided the visioning process for this plan. Northfield Township envisions meeting the community's identified needs by implementing the goals and objectives.

The goals and objectives within this chapter were formulated by community member input, the Parks and Recreation Board and Master Plan Sub-Committee, and Township Board. The goals and objectives are key in the recreation planning process, as they form the framework for decision making.

The purpose of this plan is to provide a basis for public policy decisions and technical coordination in recreational development and to bring to life the long-term vision through near-term and long-term actions.

This chapter details the community engagement process and its key results and establishes the Township's goals and objectives.

**Thank you,
Northfield Township
Community!**

**QUOTABLES FROM THE
COMMUNITY:**

“I use the Lakeland trail and go to Independence Park all the time (5-7x per week) because their trail systems are so beautiful and well-maintained.”

“I’d really love to see the Whitmore lake preserve be connected to East Shore. Also, continue the sidewalk on East Shore and connect around the whole lake.”

“Preserving natural areas with public access is very important to me and providing educational opportunities in them too: signage, identifying trees and plants and other features.”

COMMUNITY ENGAGEMENT PROCESS

The purpose of the Parks and Recreation Master Plan is to provide a clear, concise framework to meet Northfield Township’s recreation needs and wants. Community participation brings vitality and energy to the planning process.

To gather the community’s vision, needs, and wants for parks and recreation, the Township hosted an online survey, as well as distributed a physical copy of the survey within every Township tax bill. The survey was live from November-December 2020, and generated approximately 225 responses. Quality control of data collection was provided via a requirement for respondents to enter their names and addresses for their responses to be considered valid. Approximately 10% of the survey responses were eliminated due to duplicate or anonymous submittal.

Key Results

Respondents were asked a series of questions regarding long-term goals and priorities for parks and recreation in Northfield Township. Approximately 95% of survey respondents were Northfield Township residents. A summary of the results of the survey are detailed below, and full survey data is included within the appendix of this plan.

Major Themes

Major themes gathered from the community engagement provided direction for the goals and objectives section of this plan. Major themes identified included:

- Natural features preservation
- Lakefront access and preservation
- Connectivity
- Safety and walkability
- Fiscal conservation
- Township pride for assets and resources

Recreation Trends in Michigan

Recreation trends at a state level give insight into activities that provide both the greatest amount of quality of experiences and growth in popularity. This in turn affects the direction of project development in Northfield Township. According to the telephone survey of Michigan residents conducted as part of the 2018-2022 Michigan Statewide Comprehensive Outdoor Recreation Plan, the top ten outdoor recreation activities are:

- Relaxing Outdoors
- Walking
- Visiting parks or playgrounds
- Sightseeing and/or driving for pleasure
- Visiting nature centers or historic sites
- Swimming Outdoors
- Picnicking
- Fishing
- Team or individual sports
- Wildlife viewing and/or photography

Evaluating outdoor recreation trends, the public opinion survey provides useful information for recreation management decisions. Some of those trends that overlap with Northfield Township residents are:

- Michigan residents feel that outdoor recreation is very important or moderately important to their household.
- Those aged 25 to 34 and 45 to 54 had the highest rate of outdoor recreation participation.
- Three quarters of respondents are satisfied or very satisfied with the amount and quality of outdoor recreation within a half hour of their home.
- Nearly 90 percent of Michigan outdoor recreation users went outside 52 or more days in the year for outdoor recreation of any type—close to 60 percent went outside 100 or more days in the year.
- Most outdoor recreation users utilize recommendations from family and friends, followed by Internet searches or previous experience with a location to plan for their outdoor recreation activities.

Combining these trends with demographic and physical characteristic data of Northfield Township, the following priorities guide the Northfield Township Parks and Recreation Board for future project development:

- Targeting recreation activities that are based on lifestyle tapestry categories of demographic and socioeconomic characteristics.
- Ability to provide more pathways and trails to accommodate bicycle and pedestrian recreation use that contributes to a healthy and walkable community.
- Northfield Township Community Park, Whitmore Lake, and Seven Mile Preserve are great assets for the Township and residents. Developing and encouraging their use for recreation while maintaining their ecological functions is a priority for the community.

Top Visited Parks and Recreation Facilities

The top five visited parks and recreation facilities within the Township in the past year are listed below.

TOWNSHIP PARKS AND RECREATION FACILITIES	SCORE
Barker Road Play Path	43%
Whitmore Lake Preserve	39.7%
Northfield Township Community Park	39.15%
Jennings Road Athletic Complex	31.22%
Northfield Township Area Library Pavilion	30.69%



Community Driven Guiding Principles

Respondents were asked to identify the importance of a list of possible parks and recreation goals. The top six most voted for guiding principles were crafted into the goals within this plan. The top six goals are long-term recreation plans that will be met through the objectives.

- Offer Township residents opportunities to walk, run, and bike safely without leaving their community.
- Strive to ensure all new projects are fiscally sustainable.
- Enhance the health and wellness of the community through a variety of recreational opportunities throughout the year.
- Develop an interconnected network of recreation facilities and trails to enhance quality of life, offer health benefits and provide non-motorized transportation options.
- Offer Township residents the opportunity to enjoy the Whitmore Lake waterfront.
- Foster a Township-wide sense of pride in, and support for our community's recreational assets.

Priority Parks and Recreation Projects

Based on the September 2020 Parks and Recreation Survey, in order of importance and targeted completion within the next several years, the Northfield Township community would like to have the following:

1. Farmer's Market
2. Beach/swimming area
3. Bathrooms
4. Landscaped areas with paths and benches
5. Trails (unpaved)
6. Canoe/Kayak/Paddleboard Launch
7. Fishing pier
8. Kids' adventure walk through natural areas
9. Trails (paved)
10. Small neighborhood parks
11. Parking lot
12. Playground
13. Water overlook
14. Pavilion

The majority of respondents stated that the Township should pay for additional parks and recreation amenities and their maintenance via private fundraising, grants (public and private), volunteer labor and limited general fund expenditures.

COMMUNITY GOALS AND OBJECTIVES

Goal 1

Offer Township residents opportunities to walk, run, and bike safely without leaving their community.

OBJECTIVES

- a. Ensure barrier free accessibility to all existing parks, trails, and recreation areas.
- b. Increase walkability in the Whitmore Lake hamlet area.
- c. Encourage safe cycling, hiking and horseback riding.
- d. Implement safe street crossing for access to the library across Barker Road to the Northfield Township Community Park and across Main Street from the Northfield Township Community Park to the Whitmore Lake waterfront.
- e. Encourage pedestrian, non-motorized and public transportation improvements with private development projects.



Goal 2

Develop an interconnected network of recreation facilities and trails to enhance quality of life, offer health benefits and provide non-motorized transportation options.

OBJECTIVES

- a. Extend the River Walk along Horseshoe Lake Drain from the Jennings Road Athletic Complex to Barker Road.
- b. Create a trail linking North Village to the Mike Levine Lakelands Trail State Park, part of the Great Lake to Lake Trail.
- c. Consider other possible linkages, such as connecting Washtenaw County's Whitmore Lake Preserve to East Shore Drive, Whitmore Lake Preserve to Seven Mile Preserve Park and the Huron Valley Rail Trail from South Lyon through Northfield Township to Ann Arbor.
- d. Create trails through Seven Mile Preserve Park.

Goal 3

Enhance and preserve healthy ecosystems for native plants, fish, and wildlife.

OBJECTIVES

- a. Encourage the preservation and maintenance of green space.
- b. Use environmentally friendly design and construction techniques. Ensure that parks are inviting, friendly, aesthetically pleasing and consistent with the Township's overall design standards.
- c. Create landscaping showcasing native plantings and natural materials.
- d. Encourage environmental education through signage and interactive learning opportunities.

Goal 4

Maintain a fiscally conservative approach to park development and encourage public volunteerism.

OBJECTIVES

- a. Strive to ensure all new projects are fiscally sustainable.
- b. Maintain and improve existing park projects on a timely basis.
- c. Support and create awareness through Township website and social media for resident-led projects and volunteers that will not require Township funding.
- d. Research and pursue grant funding and alternative funding sources where applicable.
- e. Seek grant funding where eligible.
- f. Continue to consider dedicating Township-owned properties as open space or recreation areas.
- g. Maximize community enjoyment of Township-owned properties.
- h. Look for opportunities to acquire land that 1) is adjacent to/near existing Township-owned land planned for parks; 2) provide increased/enhanced recreation opportunities; and/or 3) will help ensure protection and access to community natural features
- i. Coordinate and strengthen partnerships with neighboring communities, service clubs, Northfield Township Area Library, Whitmore Lake Public Schools and Washtenaw County Parks and Recreation to strengthen partnerships and create fiscal synergies.
- j. Create a centralized register of volunteer needs across Northfield Township.



Goal 5

Offer Township residents the opportunity to enjoy the Whitmore Lake waterfront and Northfield Township Community Park.

- a. Initiate small projects to provide residents the opportunity to stroll and sit along the waterfront (e.g., pathways, landscaping, seating and possibly a pier/kayak launch)
- b. Support resident-led recreation projects such as the potential disc golf course, that support donations.
- c. Encourage and expand recreation and lakefront events.
- d. Focus on connecting Northfield Township Community Park to surrounding residents and communities.
- e. Develop a park design and action plan for Northfield Township Community Park, in conjunction with the Planning Commission, that complies with the North Village Master Plan and Downtown Strategic Action Plan.

Goal 6

Foster a Township-wide sense of pride in, and support for our community's recreational assets.

OBJECTIVES

- a. Promote parks and recreational opportunities in and near Northfield Township by sharing photos and information via the Township's website and social media.
- b. Create a centralized resource listing all parks and recreational opportunities within Northfield Township, including those provided by Northfield Township Community Center, Northfield Township Area Library, Whitmore Lake Public Schools and Washtenaw County Parks and Recreation
- c. Support and promote agritourism and nature-tourism activities and events that support outdoor recreation.



This page intentionally left blank.



PARKS AND RECREATION IN ACTION

05

CALL TO ACTION

Northfield Township's Action Plan serves as a template for future projects and is intended to be a flexible, year-by-year list of improvements for 2021-2025. The Action Plan supports the goals and objectives for Township development, growth, and enhancement through a comprehensive set of network improvements, policies and programs that are staggered over the five (5) year period.

Within this chapter, projects are identified which will develop the Township's recreation system in a manner that provides a total recreation experience for the entire family. Northfield Township will continue to afford residents and visitors a high-quality park and recreation experience by continually working to develop facilities for active and passive recreation, options for people of all ages, picnic and gathering spaces, and natural landscapes.

Detailed on the next several pages is Northfield Township's Action Plan, top five (5) projects for prioritization, and project descriptions to help guide and inspire responsible parties towards a common understanding and lay the groundwork for implementation.

ACTION PLAN

Northfield Township's Action Plan is detailed in Table 8, which presents each of the proposed project titles, the anticipated timeframe, estimated cost range, potential funding sources, and partnerships. Some park facilities contain various projects that are planned to occur over multiple years and involve coordination with other agencies. Other park and recreation facility projects involve targeted improvements that Northfield Township can implement quickly within one year and/or with the help of volunteers.

Cost range estimates for Northfield Township's Action Plan projects were derived in 2020 dollars and are strictly preliminary. Actual costs for each project should be specifically determined with the aid of site surveys, programming elements, and design requirements. If funding levels are lower than required to implement the project based on the schedule provided, the project's implementation timeframe could be stretched over additional years or the scope of the project condensed.

Projects in the Action Plan should be reviewed annually by the Parks and Recreation Board and the Board of Trustees, allowing for adjustments to respond to updated needs, conditions, and the identification of funding opportunities.

TOP 5 PRIORITY PROJECTS

The following top five priority projects represent near-term investments that have the potential to create major and immediate improvements to the Township's parks and recreation system.

These top five projects were identified by the community, as well as the Township Administration, to serve as an excellent starting point for future prioritization and action.

Full project descriptions are detailed on the following pages:

1. Create awareness of available parks and recreation facilities and create volunteer system/database.
2. Collaborate on a park design and project plan for Northfield Community Park that incorporates lakefront venue and recreational amenities for North Village, building on the North Village Master Plan.
3. Begin development of Northfield Township Community Park based on the park design and project plan.
The Northfield Township Parks and Recreation Board and the Northfield Township Planning Commission will need to provide recommendations to the Northfield Township Board for approval. Features to be considered include a water overlook, pavilion, canoe/kayak/paddleboard launch along with an walkable trail, fitness areas, and high-impact of native plantings.
4. Create a border-to-border loop trail linking the trail surrounding North Village to the Mike Levine Lakelands Trail State Park, linking the Huron Valley Rail Trail System from South Lyon through Northfield Township to Ann Arbor.
5. Create a river walk along Horseshoe Lake Drain from the Jennings Road Athletic Complex to Barker Road linking to the trail that surrounds North Village.

LEGEND

TIMEFRAME	
Near-term	Less than 1 year
Mid-term	1-3 years
Long-term	Over 3 years

ESTIMATED COST RANGE	
\$	\$0-10,000
\$\$	\$10,000 - \$500,000
\$\$\$	\$500,000+

COLLABORATION AND FUNDING SOURCES	
CS/BS	Corporate/Business Sponsor
G	Grants (MDNR, CDBG)
GF	General Fund
D	Donations
DDA	Downtown Development Authority
PC	Planning Commission
BOT	Board of Trustees
WC	Washtenaw County
NC	Neighboring Communities

TABLE 8. ACTION PLAN

PROJECT	TIMEFRAME	ESTIMATED COST RANGE	COLLABORATION AND FUNDING SOURCES
Create awareness of available parks and recreation facilities and create volunteer system/database	Near term	\$	GF, D
Implement capital improvements (signage) for the Northfield Community Garden	Near term	\$	GF, D
Implement capital improvements (i.e. flooring installation and interior painting) at the Northfield Township Community/Senior Center	Near term	\$	G
Collaborate on the park design and project plan to implement a lakefront venue and recreational amenities for North Village	Near term	\$\$	PC, BOT
Begin development of Northfield Township Community Park based on an approved park design and project plan by the Northfield Township Board.	Near term	\$\$	GF, D, G, BOT, PC, DDA, WC, CS/BS
Create a trail linking North Village to the Mike Levine Lakelands Trail State Park	Near term	\$	D, G, BOT, DDA, NC, CS/BS
Create a river walk along Horseshoe Lake Drain from Jennings Road Athletic Complex to Barker Road	Near term	\$\$	D, G, BOT, PC, DDA, WC, CS/BS
Farmers Market	Mid-term	\$	D, G, PC, DDA, NC, CS/BS
Fitness Court	Mid-term	\$\$	D, G, PC, BOT
Canoe/Kayak/Paddleboard Launch	Mid-term	\$	GF, D, G, BOT, PC, DDA, CS/BS
Seven Mile Preserve (Park)	Long-term	\$\$\$	D, G, BOT, PC, DDA, WC, CS/BS
Walkable Community	Long-term	\$	D, G, PC, DDA, BOT
Beach/Swimming area	Long-term	\$\$\$	D, G, PC, DDA, BOT, CS/BS
Bathrooms	Long-term	\$\$\$	GF, D, G, BOT, PC, DDA, CS/BS

PROJECT DESCRIPTIONS

Create Awareness of Available Parks and Rec Facilities and Create Volunteer System/Database

Create a volunteer database to provide organization and notify residents of upcoming opportunities on a timely basis. Volunteers are an integral part of the functioning parks and recreation system in Northfield Township. Based on the Parks and Recreation Master Plan survey, respondents showed interest in future volunteer opportunities.

Park Design and Project Plan for Lakefront Venue and Recreational Amenities

Complete a park design and project plan for Northfield Township Community Park. Features to be considered are a water overlook, pavilion, canoe/kayak/paddleboard launch along with an walkable trail, fitness areas, and high-impact of native plantings. Consideration for low-cost temporary recreational amenities that can be easily updated, moved, modified or incorporated into future park plans. The Northfield Township Parks and Recreation board and the Northfield Township Planning Commission will need to provide recommendations to the Northfield Township Board for approval.

Disc Golf Course

Support resident-driven proposal for implementation of a disc golf course. The disc golf course is completely resident and volunteer driven. As the park design and project plan are being drafted and finalized, the disc golf course can be a low-cost temporary facility that can be easily updated, moved, modified or incorporated into future park plans.

Lakefront Improvements

Design, implement and maintain landscaping, native plantings, and water overlook on Whitmore Lake. This will provide Northfield Township Community members with a placemaking opportunity at an inexpensive cost.

North Village Trail Connections

Connect the North Village site to the Woodbridge site and to Mike Levine State Trail (Hamburg). By working with neighboring communities and Washtenaw County, the Township will initiate important trail connections that contribute to regional connectivity. As part of the Border-to-Border Loop Trail Connections, further research collaboration efforts with neighboring municipalities to connect other trails such as the Huron and Iron Belle Trail (Ann Arbor).

Additional Trail Connections

Continue collaboration with Washtenaw County and surrounding communities to increase Northfield Township's connections with trails and parks. Specifically, work toward connecting Whitmore Lake Preserve.

River walk along Horseshoe Lake Drain between the Jennings Road Athletic Complex and Barker Road

Expand the river walk along the Horseshoe Lake Drain for improved connectivity to Barker Road, and connect to the trail surrounding North Village. Design pathway to allow for passive and active usage, (e.g. biking, walking etc.).

Farmer's Market

Identify an appropriate site for location of a community farmer's market, organize vendors, and identify appropriate parks and recreation fundraising activities.

Canoe/Kayak/Paddleboard Launch

Designate a water sports launch area on the west side of Whitmore Lake with focus on safety and accessibility for use by community members. Include wayfinding signage that complements other Township signage.

Seven Mile Preserve Park

Create a centrally-located park to provide open space. Tentatively identified as "Seven Mile Preserve Park," located behind the Northfield Township Public Safety Building, in the area of the Summer Home Subdivision. The land has been acquired over time by Northfield Township with the goal of developing the area for recreational use while preserving and enhancing its natural beauty, potentially providing the community greater interconnectivity.

Healthy and Walkable Community

Integrate and improve passive and active recreation within sidewalks and trails that exist in Northfield Township via a wayfinding signage plan with emphasis on landmark/destination features. Create more pathways to accommodate bicycle and pedestrian recreation use to contribute to a healthy and walkable community. One example is having an adventure walk that serves as a free recreation activity for all ages and allows for exploration of Northfield Township's natural features.

Fitness Court

Build a fitness court for the community focusing on enhancing the wellness and health of the Township and visitors while complimenting the trails surrounding North Village.

Beach/Swimming Area

Locate an area for design and implementation of a beach/swimming area for enjoyment of the lakefront area. Redesign and relocate any vegetation to be removed and replace with native plantings to provide low-maintenance landscaping.

Bathrooms

Build bathrooms for community members to use while recreating on the lakefront. As the lakefront is opened up for community usage, more public amenities will be needed. This long-term project aims to further the placemaking strategy put into action via lakefront improvements.

Northfield Township Community/Senior Center

Implement capital improvements (i.e. flooring and interior painting) in the community center and grounds.

Northfield Township Community Gardens

Implement capital improvements (such as a sign) and maintenance on the grounds.



235 East Main Street, Suite 105
Northville, Michigan 48167

T: 248-596-0920

F: 248-596-0930

www.mcka.com

John Jackson, AICPPresident

Paul Lippens, AICP, NCI. . . .Community Manager

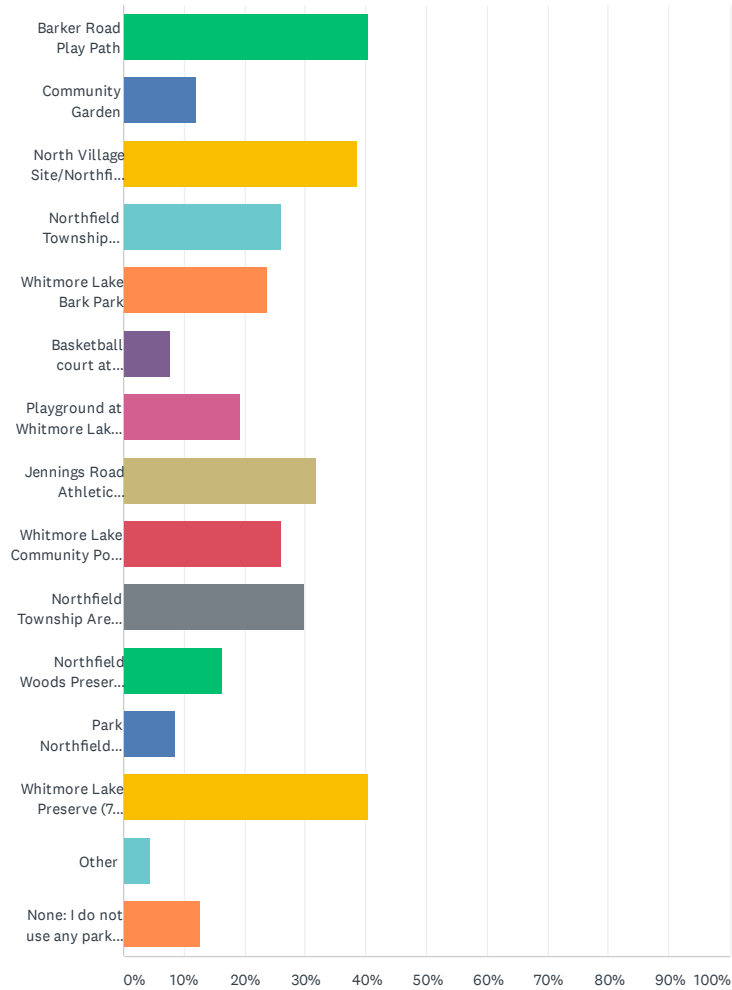
Natalie BondProject Manager

Erin Raine.Graphic Designer

Northfield Township Parks and Recreation Master Plan Survey

Q1 Please check which of the following parks and recreation facilities you have visited over the past 12 months.

Answered: 208 Skipped: 4

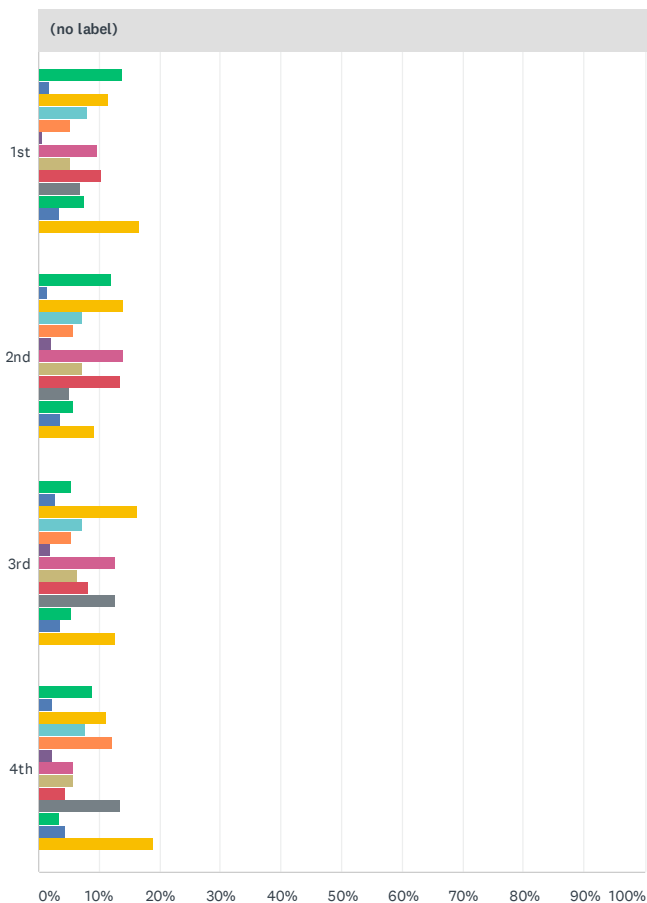


ANSWER CHOICES	RESPONSES	
Barker Road Play Path	40.38%	84
Community Garden	12.02%	25
North Village Site/Northfield Community Park	38.46%	80
Northfield Township Community Center	25.96%	54
Whitmore Lake Bark Park	23.56%	49
Basketball court at Whitmore Lake Elementary School	7.69%	16
Playground at Whitmore Lake Elementary school	19.23%	40
Jennings Road Athletic Complex	31.73%	66
Whitmore Lake Community Pool, Track, & Other Facilities	25.96%	54
Northfield Township Area Library Pavilion	29.81%	62
Northfield Woods Preserve (Northfield Church Road)	16.35%	34
Park Northfield (Pontiac Trail)	8.65%	18
Whitmore Lake Preserve (7 Mile Road)	40.38%	84
Other	4.33%	9
None: I do not use any parks and recreation facilities	12.50%	26
Total Respondents: 208		

Northfield Township Parks and Recreation Master Plan Survey

Q2 Which four of the facilities listed in question 1 do you use most often?

Answered: 177 Skipped: 35

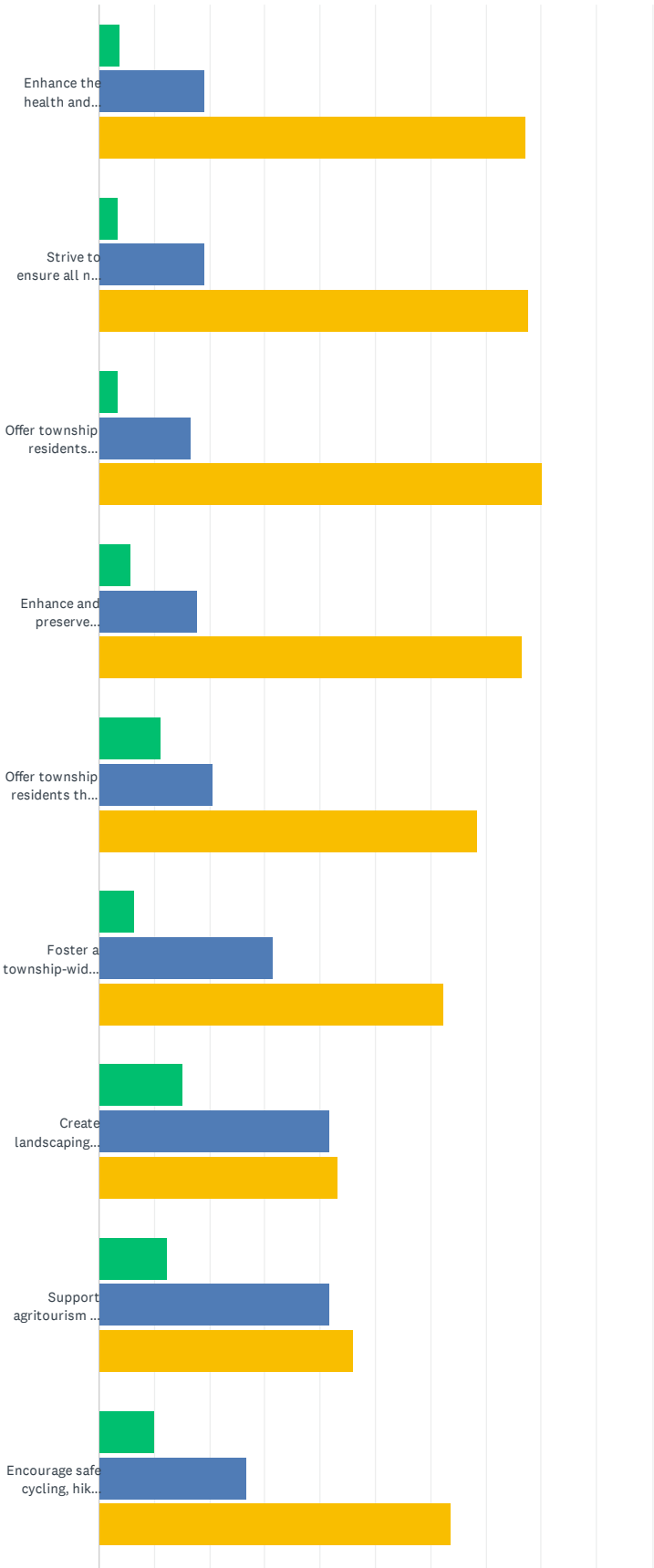


■ Barker Road Play Path ■ Community Garden
■ North Village site/Northfield Township Community Park
■ Northfield Township Community Center ■ Whitmore Lake Bark Park
■ Basketball court at Whitmore Lake Elementary School
■ Jennings Road Athletic Complex
■ Playground at Whitmore Lake Elementary School
■ Whitmore Lake Community Pool, Walking Track and other facilities
■ Northfield Township Area Library Pavilion
■ Northfield Woods Preserve (Northfield Church Road)
■ Park Northfield (Pontiac Trail) ■ Whitmore Lake Preserve (7 Mile Road)

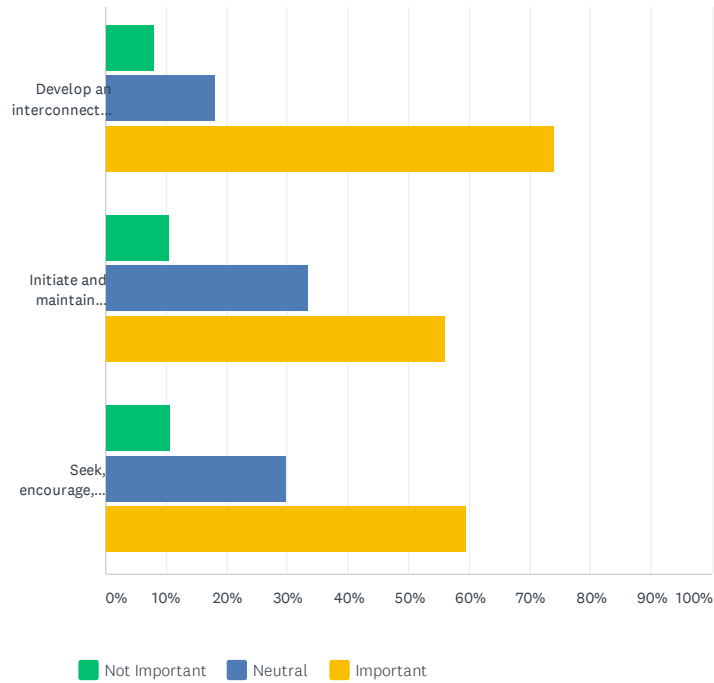
(no label)										
	BARKER ROAD PLAY PATH	COMMUNITY GARDEN	NORTH VILLAGE SITE/NORTHFIELD TOWNSHIP COMMUNITY PARK	NORTHFIELD TOWNSHIP COMMUNITY CENTER	WHITMORE LAKE BARK PARK	BASKETBALL COURT AT WHITMORE LAKE ELEMENTARY SCHOOL	JENNINGS ROAD ATHLETIC COMPLEX	PLAYGROUND AT WHITMORE LAKE ELEMENTARY SCHOOL	WHITMORE LAKE COMMUNITY POOL, WALKING TRACK AND OTHER FACILITIES	NOI TOV ARE LIB PAV
1st	13.71% 24	1.71% 3	11.43% 20	8.00% 14	5.14% 9	0.57% 1	9.71% 17	5.14% 9	10.29% 18	
2nd	11.97% 17	1.41% 2	14.08% 20	7.04% 10	5.63% 8	2.11% 3	14.08% 20	7.04% 10	13.38% 19	
3rd	5.41% 6	2.70% 3	16.22% 18	7.21% 8	5.41% 6	1.80% 2	12.61% 14	6.31% 7	8.11% 9	
4th	8.89% 8	2.22% 2	11.11% 10	7.78% 7	12.22% 11	2.22% 2	5.56% 5	5.56% 5	4.44% 4	

Q3 Please identify the importance of the following guiding principles for parks and recreation in Northfield Township.

Answered: 212 Skipped: 0



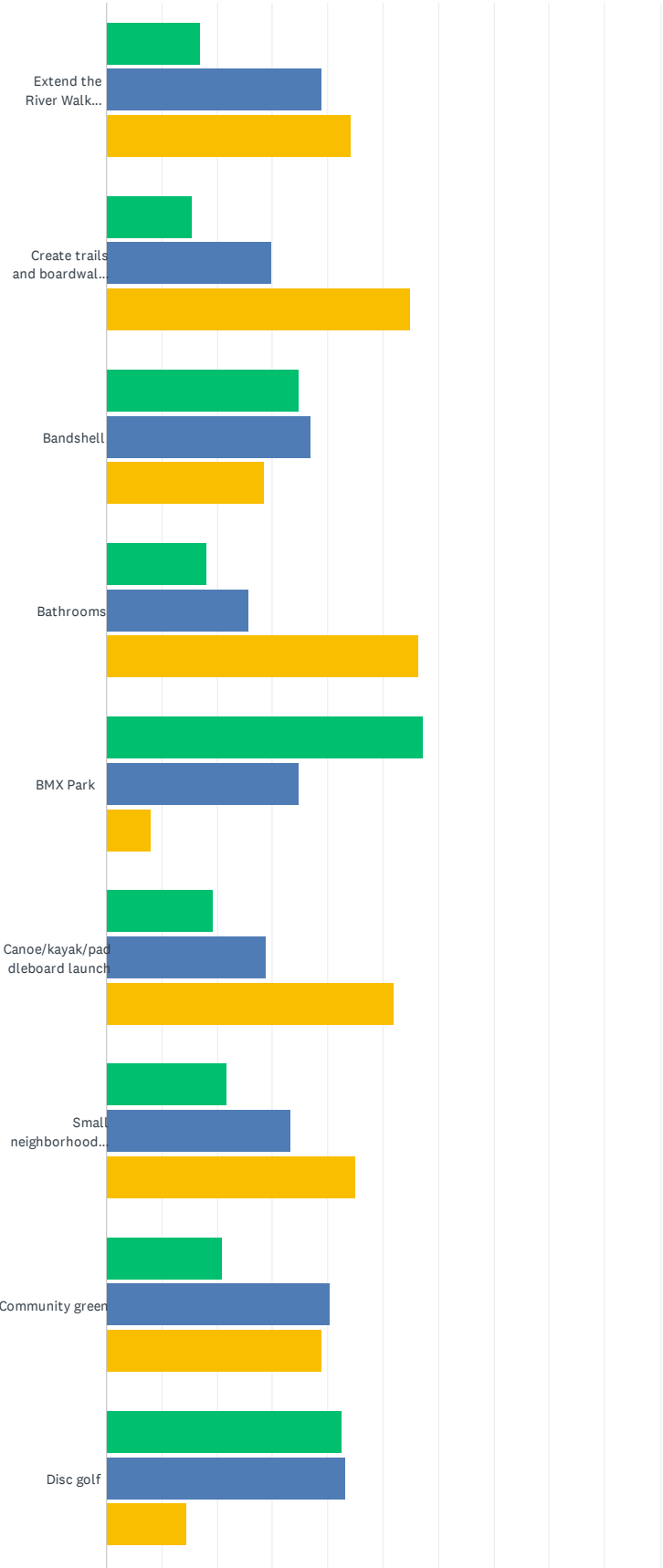
Northfield Township Parks and Recreation Master Plan Survey



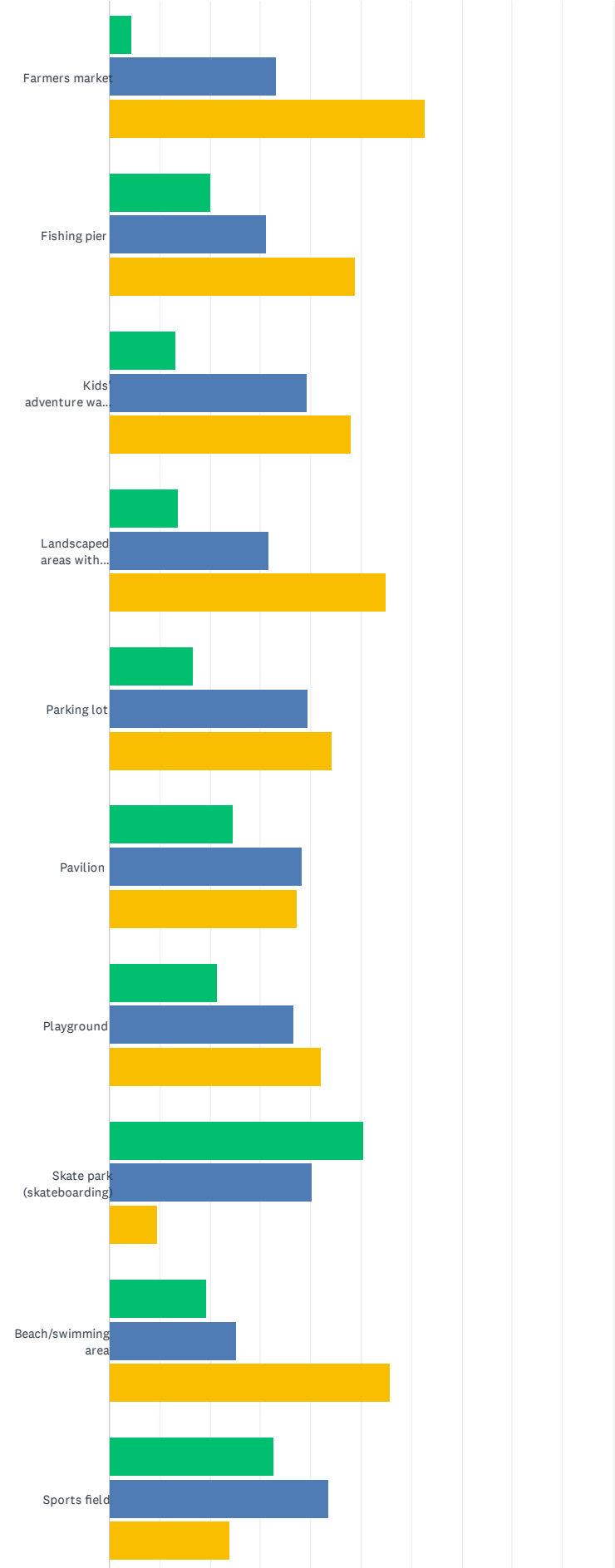
	NOT IMPORTANT	NEUTRAL	IMPORTANT	TOTAL	WEIGHTED AVERAGE
Enhance the health and wellness of the community through a variety of recreational opportunities throughout the year.	3.81% 8	19.05% 40	77.14% 162	210	2.73
Strive to ensure all new projects are fiscally sustainable	3.35% 7	19.14% 40	77.51% 162	209	2.74
Offer township residents opportunities to walk, run, and bike safely without leaving their community.	3.30% 7	16.51% 35	80.19% 170	212	2.77
Enhance and preserve healthy ecosystems for native plants, fish, and wildlife.	5.74% 12	17.70% 37	76.56% 160	209	2.71
Offer township residents the opportunity to enjoy the Whitmore Lake waterfront.	11.00% 23	20.57% 43	68.42% 143	209	2.57
Foster a township-wide sense of pride in, and support for our community's recreational assets.	6.19% 13	31.43% 66	62.38% 131	210	2.56
Create landscaping showcasing native plantings and natural materials to enhance Northfield Township's natural beauty.	15.17% 32	41.71% 88	43.13% 91	211	2.28
Support agritourism and events featuring the township's farmers.	12.32% 26	41.71% 88	45.97% 97	211	2.34
Encourage safe cycling, hiking and horseback riding on rural roads.	9.95% 21	26.54% 56	63.51% 134	211	2.54
Develop an interconnected network of recreation facilities and trails to enhance quality of life, offer health benefits and provide non-motorized transportation options.	8.02% 17	17.92% 38	74.06% 157	212	2.66
Initiate and maintain community special events or contests to invite, encourage and engage public participation and exploration of township parks and amenities.	10.53% 22	33.49% 70	55.98% 117	209	2.45
Seek, encourage, recognize and reward private investment and participation in the construction and maintenance of park amenities.	10.73% 22	29.76% 61	59.51% 122	205	2.49

Q4 Please identify the importance of the following possible parks and recreation projects within Northfield Township.

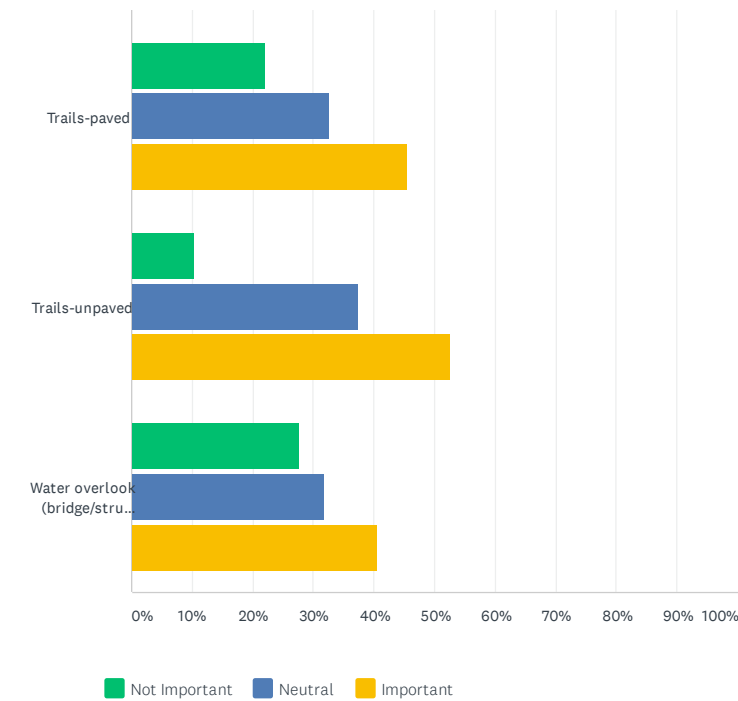
Answered: 211 Skipped: 1



Northfield Township Parks and Recreation Master Plan Survey



Northfield Township Parks and Recreation Master Plan Survey

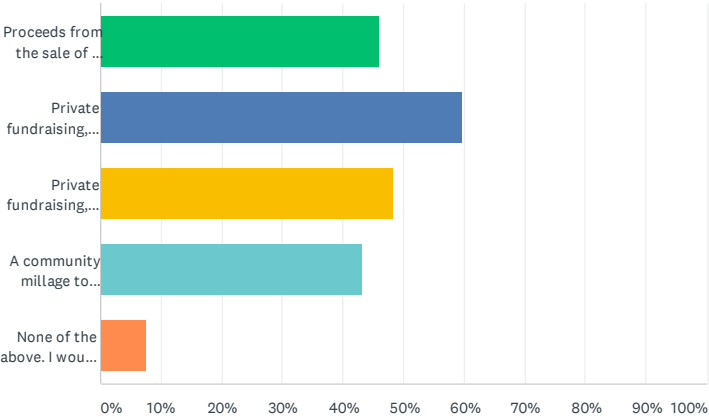


Northfield Township Parks and Recreation Master Plan Survey

	NOT IMPORTANT	NEUTRAL	IMPORTANT	TOTAL
Extend the River Walk along Horseshoe Lake Drain from the Jennings Road Athletic Complex to Barker Road.	16.99% 35	38.83% 80	44.17% 91	206
Create trails and boardwalks through the proposed Seven Mile Preserve Park (township-owned land behind the Public Safety Building).	15.53% 32	29.61% 61	54.85% 113	206
Bandshell	34.83% 70	36.82% 74	28.36% 57	201
Bathrooms	17.96% 37	25.73% 53	56.31% 116	206
BMX Park	57.21% 115	34.83% 70	7.96% 16	201
Canoe/kayak/paddleboard launch	19.23% 40	28.85% 60	51.92% 108	208
Small neighborhood parks (i.e. playgrounds, pocket parks)	21.78% 44	33.17% 67	45.05% 91	202
Community green	20.87% 43	40.29% 83	38.83% 80	206
Disc golf	42.50% 85	43.00% 86	14.50% 29	200
Farmers market	4.37% 9	33.01% 68	62.62% 129	206
Fishing pier	20.00% 41	31.22% 64	48.78% 100	205
Kids' adventure walk through natural areas	13.17% 27	39.02% 80	47.80% 98	205
Landscaped areas with paths and benches	13.59% 28	31.55% 65	54.85% 113	206
Parking lot	16.50% 34	39.32% 81	44.17% 91	206
Pavilion	24.38% 49	38.31% 77	37.31% 75	201
Playground	21.29% 43	36.63% 74	42.08% 85	202
Skate park (skateboarding)	50.49% 103	40.20% 82	9.31% 19	204
Beach/swimming area	19.32% 40	25.12% 52	55.56% 115	207
Sports field	32.67% 66	43.56% 88	23.76% 48	202
Trails-paved	22.01% 46	32.54% 68	45.45% 95	209
Trails-unpaved	10.19% 21	37.38% 77	52.43% 108	206
Water overlook (bridge/structure/platform with railings hanging over Whitmore Lake)	27.54% 57	31.88% 66	40.58% 84	207

Q5 How should the township pay for additional parks and recreation amenities and their maintenance? Please check all that apply.

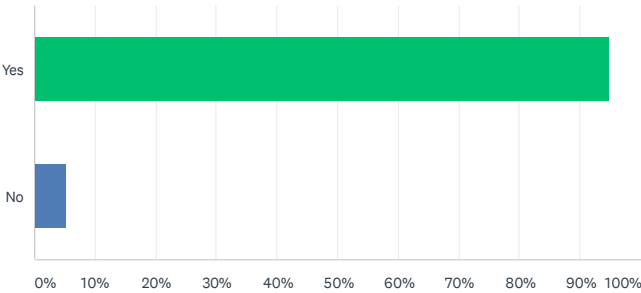
Answered: 211 Skipped: 1



ANSWER CHOICES	RESPONSES	
Proceeds from the sale of a portion of the North Village site to developers (applies only to the Northfield Township Community Park).	45.97%	97
Private fundraising, grants (public and private), volunteer labor and limited general fund expenditures.	59.72%	126
Private fundraising, grants (public and private), volunteer labor and greater general fund expenditures.	48.34%	102
A community millage to create a parks and recreation system.	43.13%	91
None of the above. I would like no additional resources or general fund expenditures to be spent on park assets.	7.58%	16
Total Respondents: 211		

Q6 Do you live in Northfield Township?

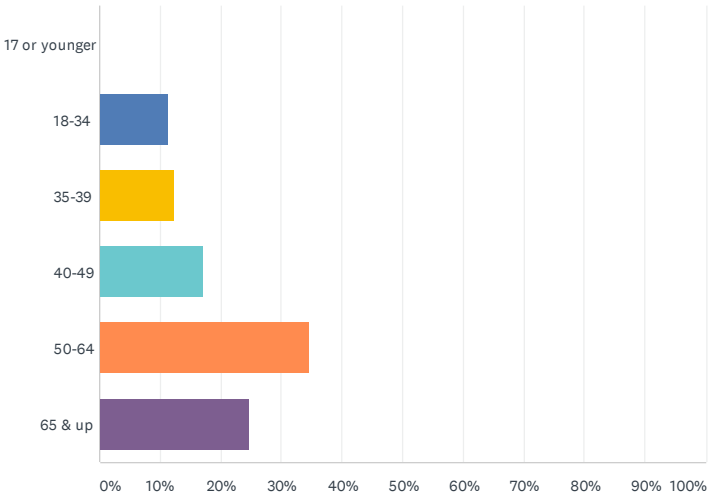
Answered: 208 Skipped: 4



ANSWER CHOICES	RESPONSES	
Yes	94.71%	197
No	5.29%	11
TOTAL		208

Q7 What is your age?

Answered: 211 Skipped: 1



ANSWER CHOICES	RESPONSES	
17 or younger	0.00%	0
18-34	11.37%	24
35-39	12.32%	26
40-49	17.06%	36
50-64	34.60%	73
65 & up	24.64%	52
TOTAL		211

Q8 Do you have any additional comments regarding parks and recreation in Northfield Township?

Answered: 126 Skipped: 86

Q9 (Required) Similar to a Public Hearing, you must provide your first name, last name, and address for your survey to be counted.

Answered: 211 Skipped: 1

Q10 (Optional) Please list your email address if you are interested in learning more or helping with the development of parks and recreation opportunities within Northfield Township. Please also advise if there is a specific project you would like to assist with.

Answered: 104 Skipped: 108